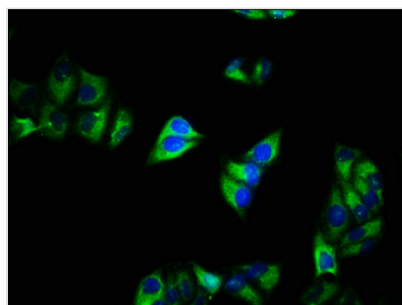




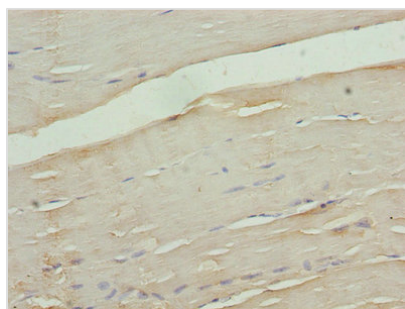
CACNA2D1 Antibody

| | |
|----------------------------|---|
| Product Code | CSB-PA004407LA01HU |
| Storage | Upon receipt, store at -20°C or -80°C. Avoid repeated freeze. |
| Uniprot No. | P54289 |
| Immunogen | Recombinant Human Voltage-dependent calcium channel subunit alpha-2/delta-1 protein (577-717AA) |
| Raised In | Rabbit |
| Species Reactivity | Human |
| Tested Applications | ELISA, IHC, IF; Recommended dilution: IHC:1:20-1:200, IF:1:50-1:500 |
| Form | Liquid |
| Conjugate | Non-conjugated |
| Storage Buffer | Preservative: 0.03% Proclin 300 Constituents: 50% Glycerol, 0.01M PBS, PH 7.4 |
| Purification Method | >95%, Protein G purified |
| Isotype | IgG |
| Clonality | Polyclonal |
| Alias | Voltage-dependent calcium channel subunit alpha-2/delta-1 (Voltage-gated calcium channel subunit alpha-2/delta-1) [Cleaved into: Voltage-dependent calcium channel subunit alpha-2-1; Voltage-dependent calcium channel subunit delta-1], CACNA2D1, CACNL2A CCHL2A MHS3 |
| Immunogen Species | Homo sapiens (Human) |
| Research Area | Neuroscience |
| Target Names | CACNA2D1 |

Image



Immunofluorescence staining of HeLa cells with CSB-PA004407LA01HU at 1:200, counter-stained with DAPI. The cells were fixed in 4% formaldehyde, permeabilized using 0.2% Triton X-100 and blocked in 10% normal Goat Serum. The cells were then incubated with the antibody overnight at 4°C. The secondary antibody was Alexa Fluor 488-conjugated AffiniPure Goat Anti-Rabbit IgG(H+L).



Immunohistochemistry of paraffin-embedded human skeletal muscle tissue using CSB-PA004407LA01HU at dilution of 1:100