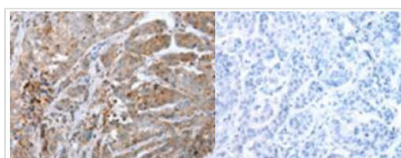




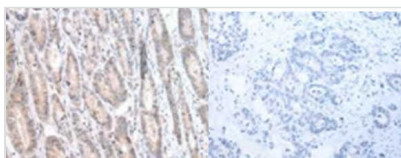
# CALB2 antibody

<b>Product Code</b>	CSB-PA004433
<b>Storage</b>	Upon receipt, store at -20°C or -80°C. Avoid repeated freeze.
<b>Uniprot No.</b>	P22676
<b>Immunogen</b>	Synthetic peptide of Human CALB2
<b>Raised In</b>	Rabbit
<b>Species Reactivity</b>	Human
<b>Tested Applications</b>	WB, IHC, ELISA; WB:1:500-1:2000, IHC:1:100-1:300, ELISA:1:20000
<b>Form</b>	Liquid
<b>Conjugate</b>	Non-conjugated
<b>Storage Buffer</b>	-20°C, pH7.4 PBS, 0.05% NaN <sub>3</sub> , 40% Glycerol
<b>Purification Method</b>	Antigen Affinity purified
<b>Isotype</b>	IgG
<b>Clonality</b>	Polyclonal
<b>Alias</b>	CR; CAL2; CAB29
<b>Immunogen Species</b>	Homo sapiens (Human)
<b>Target Names</b>	CALB2

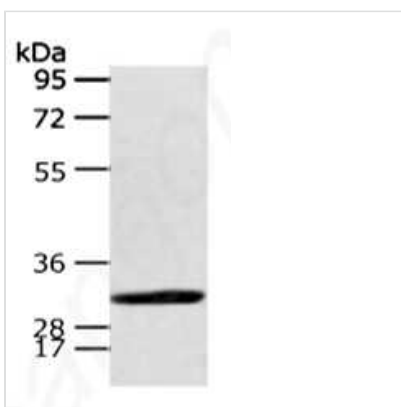
## Image



The image on the left is immunohistochemistry of paraffin-embedded Human breast cancer tissue using CALB2 Antibody at dilution 1/25, on the right is treated with synthetic peptide. (Original magnification: x200)



The image on the left is immunohistochemistry of paraffin-embedded Human gastric cancer tissue using CALB2 Antibody at dilution 1/25, on the right is treated with synthetic peptide. (Original magnification: x200)



Gel: 8%SDS-PAGE Lysate: 40μg Lane: Human fetal brain tissue Primary antibody: CALB2 Antibody at dilution 1/400 dilution Secondary antibody: Goat anti rabbit IgG at 1/8000 dilution Exposure time: 40 seconds

