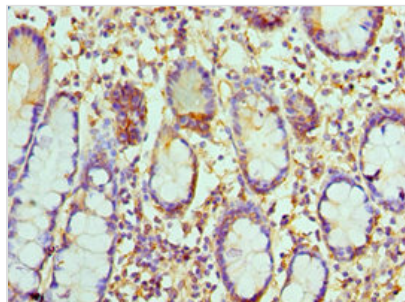




# CCL8 Antibody

<b>Product Code</b>	CSB-PA004802ESR1HU
<b>Storage</b>	Upon receipt, store at -20°C or -80°C. Avoid repeated freeze.
<b>Uniprot No.</b>	P80075
<b>Immunogen</b>	Recombinant Human C-C motif chemokine 8 protein (23-99AA)
<b>Raised In</b>	Rabbit
<b>Species Reactivity</b>	Human
<b>Tested Applications</b>	ELISA, IHC; Recommended dilution: IHC:1:20-1:200
<b>Form</b>	Liquid
<b>Conjugate</b>	Non-conjugated
<b>Storage Buffer</b>	PBS with 0.02% sodium azide, 50% glycerol, pH7.3.
<b>Purification Method</b>	Antigen Affinity Purified
<b>Isotype</b>	IgG
<b>Clonality</b>	Polyclonal
<b>Alias</b>	C-C motif chemokine 8 (HC14) (Monocyte chemoattractant protein 2) (Monocyte chemotactic protein 2) (MCP-2) (Small-inducible cytokine A8) [Cleaved into: MCP-2(6-76)], CCL8, MCP2 SCYA10 SCYA8
<b>Immunogen Species</b>	Homo sapiens (Human)
<b>Research Area</b>	Immunology
<b>Target Names</b>	CCL8

## Image



Immunohistochemistry of paraffin-embedded human small intestine tissue using CSB-PA004802ESR1HU at dilution of 1:100