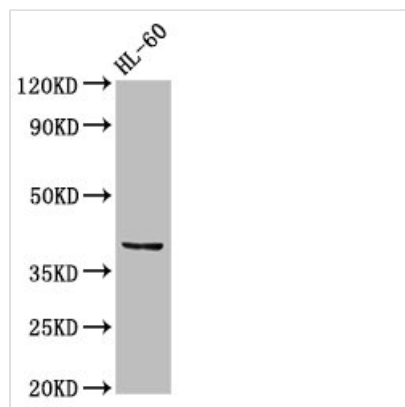




CCRL2 Antibody

| | |
|----------------------------|--|
| Product Code | CSB-PA004852LA01HU |
| Storage | Upon receipt, store at -20°C or -80°C. Avoid repeated freeze. |
| Uniprot No. | O00421 |
| Immunogen | Recombinant Human C-C chemokine receptor-like 2 protein (1-43AA) |
| Raised In | Rabbit |
| Species Reactivity | Human |
| Tested Applications | ELISA, WB, IHC; Recommended dilution: WB:1:500-1:5000, IHC:1:20-1:200 |
| Form | Liquid |
| Conjugate | Non-conjugated |
| Storage Buffer | Preservative: 0.03% Proclin 300 Constituents: 50% Glycerol, 0.01M PBS, pH 7.4 |
| Purification Method | >95%, Protein G purified |
| Isotype | IgG |
| Clonality | Polyclonal |
| Alias | C-C chemokine receptor-like 2 (Chemokine receptor CCR11) (Chemokine receptor X) (Putative MCP-1 chemokine receptor), CCRL2, CCR11 CCR6 CKRX CRAM HCR |
| Immunogen Species | Homo sapiens (Human) |
| Research Area | Immunology |
| Target Names | CCRL2 |

Image



Western Blot

Positive WB detected in: HL60 whole cell lysate

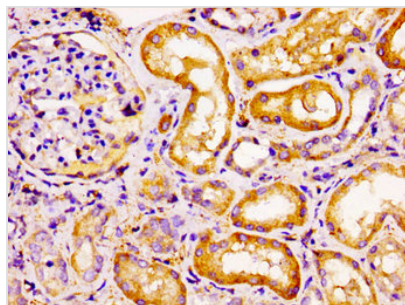
All lanes: CCRL2 antibody at 2.5µg/ml

Secondary

Goat polyclonal to rabbit IgG at 1/50000 dilution

Predicted band size: 40, 41 kDa

Observed band size: 40 kDa



Immunohistochemistry of paraffin-embedded human kidney tissue using CSB-PA004852LA01HU at dilution of 1:100