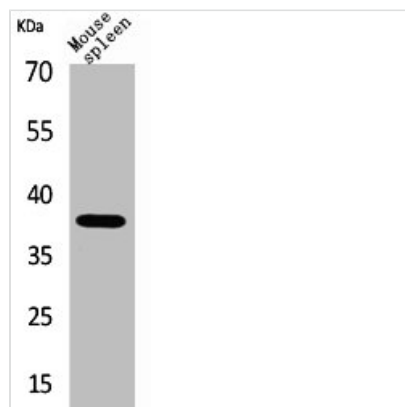




CD68 Antibody

Product Code	CSB-PA005139
Storage	Upon receipt, store at -20°C or -80°C. Avoid repeated freeze.
Uniprot No.	P34810
Immunogen	Synthesized peptide derived from the Internal region of Human CD68.
Raised In	Rabbit
Species Reactivity	Human
Tested Applications	WB, ELISA; WB:1:500-1:2000, ELISA:1:20000
Form	Liquid
Conjugate	Non-conjugated
Storage Buffer	Liquid in PBS containing 50% glycerol, 0.5% BSA and 0.02% sodium azide.
Purification Method	The antibody was affinity-purified from rabbit antiserum by affinity-chromatography using epitope-specific immunogen.
Isotype	IgG
Alias	CD68; Macrosialin; Gp110; CD68
Immunogen Species	Homo sapiens (Human)
Target Names	CD68

Image



Western Blot analysis of mouse spleen cells using CD68 Polyclonal Antibody