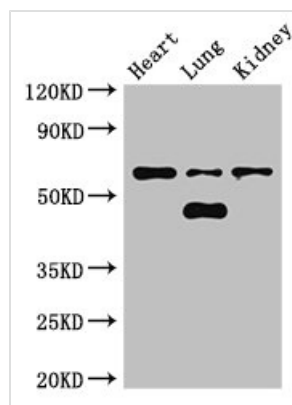




CERK Antibody

Product Code	CSB-PA005256LA01HU
Storage	Upon receipt, store at -20°C or -80°C. Avoid repeated freeze.
Uniprot No.	Q8TCT0
Immunogen	Recombinant Human Ceramide kinase protein (212-478AA)
Raised In	Rabbit
Species Reactivity	Human, Mouse
Tested Applications	ELISA, WB, IHC, IF; Recommended dilution: WB:1:500-1:5000, IHC:1:20-1:200, IF:1:50-1:200
Form	Liquid
Conjugate	Non-conjugated
Storage Buffer	Preservative: 0.03% Proclin 300 Constituents: 50% Glycerol, 0.01M PBS, PH 7.4
Purification Method	>95%, Protein G purified
Isotype	IgG
Clonality	Polyclonal
Alias	Ceramide kinase (hCERK) (EC 2.7.1.138) (Acylsphingosine kinase) (Lipid kinase 4) (LK4), CERK, KIAA1646
Immunogen Species	Homo sapiens (Human)
Research Area	Cell Biology
Target Names	CERK

Image



Western Blot

Positive WB detected in: Mouse heart tissue, Mouse lung tissue, Mouse kidney tissue

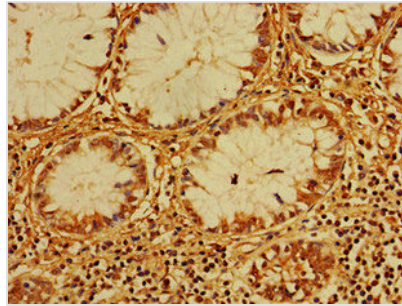
All lanes: CERK antibody at 3μg/ml

Secondary

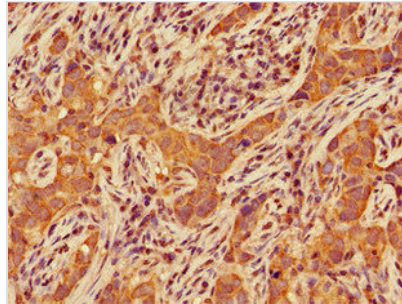
Goat polyclonal to rabbit IgG at 1/50000 dilution

Predicted band size: 60, 38 kDa

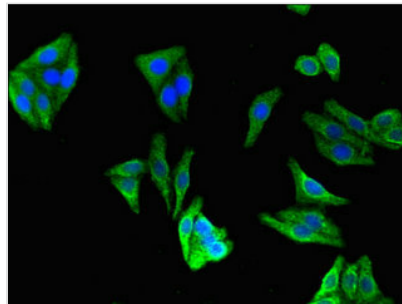
Observed band size: 60, 48 kDa



Immunohistochemistry of paraffin-embedded human colon cancer using CSB-PA005256LA01HU at dilution of 1:100



Immunohistochemistry of paraffin-embedded human pancreatic cancer using CSB-PA005256LA01HU at dilution of 1:100



Immunofluorescent analysis of HepG2 cells using CSB-PA005256LA01HU at dilution of 1:100 and Alexa Fluor 488-conjugated AffiniPure Goat Anti-Rabbit IgG(H+L)