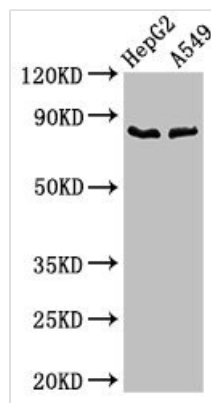




# Cfb Antibody

<b>Product Code</b>	CSB-PA005268LA01MO
<b>Storage</b>	Upon receipt, store at -20°C or -80°C. Avoid repeated freeze.
<b>Uniprot No.</b>	P04186
<b>Immunogen</b>	Recombinant Mouse Complement factor B protein (23-761AA)
<b>Raised In</b>	Rabbit
<b>Species Reactivity</b>	Mouse, Human
<b>Tested Applications</b>	ELISA, WB; Recommended dilution: WB:1:500-1:5000
<b>Form</b>	Liquid
<b>Conjugate</b>	Non-conjugated
<b>Storage Buffer</b>	Preservative: 0.03% Proclin 300 Constituents: 50% Glycerol, 0.01M PBS, pH 7.4
<b>Purification Method</b>	>95%, Protein G purified
<b>Isotype</b>	IgG
<b>Clonality</b>	Polyclonal
<b>Alias</b>	Complement factor B (EC 3.4.21.47) (C3/C5 convertase) [Cleaved into: Complement factor B Ba fragment; Complement factor B Bb fragment], Cfb, Bf H2-Bf
<b>Immunogen Species</b>	Mus musculus (Mouse)
<b>Research Area</b>	Immunology
<b>Target Names</b>	Cfb

## Image



### Western Blot

Positive WB detected in: HepG2 whole cell lysate, A549 whole cell lysate

All lanes: CFB antibody at 2.8µg/ml

### Secondary

Goat polyclonal to rabbit IgG at 1/50000 dilution

Predicted band size: 86 kDa

Observed band size: 86 kDa