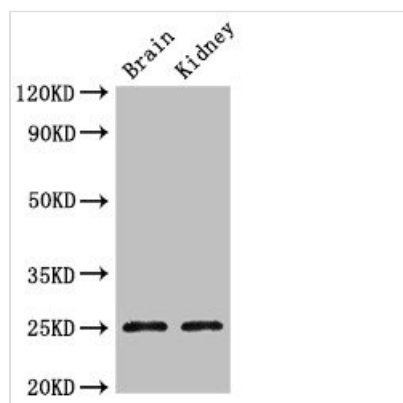




CLDN10 Antibody

Product Code	CSB-PA005491LA01HU
Storage	Upon receipt, store at -20°C or -80°C. Avoid repeated freeze.
Uniprot No.	P78369
Immunogen	Recombinant Human Claudin-10 protein (185-224AA)
Raised In	Rabbit
Species Reactivity	Human, Mouse
Tested Applications	ELISA, WB, IHC, IF; Recommended dilution: WB:1:500-1:5000, IHC:1:20-1:200, IF:1:50-1:200
Form	Liquid
Conjugate	Non-conjugated
Storage Buffer	Preservative: 0.03% Proclin 300 Constituents: 50% Glycerol, 0.01M PBS, pH 7.4
Purification Method	>95%, Protein G purified
Isotype	IgG
Clonality	Polyclonal
Alias	Claudin-10 (Oligodendrocyte-specific protein-like) (OSP-like), CLDN10
Immunogen Species	Homo sapiens (Human)
Research Area	Signal Transduction
Target Names	CLDN10

Image



Western Blot

Positive WB detected in: Mouse brain tissue,
Mouse kidney tissue

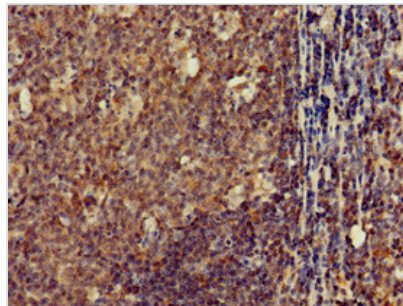
All lanes: CLDN10 antibody at 2.4µg/ml

Secondary

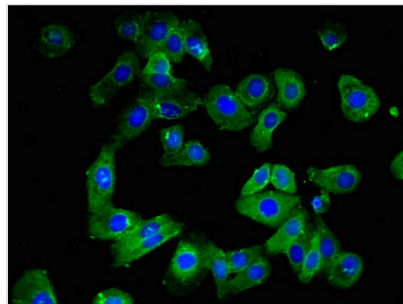
Goat polyclonal to rabbit IgG at 1/50000 dilution

Predicted band size: 25, 23 kDa

Observed band size: 25 kDa



Immunohistochemistry of paraffin-embedded human tonsil tissue using CSB-PA005491LA01HU at dilution of 1:100



Immunofluorescent analysis of HepG2 cells using CSB-PA005491LA01HU at dilution of 1:100 and Alexa Fluor 488-conjugated AffiniPure Goat Anti-Rabbit IgG(H+L)