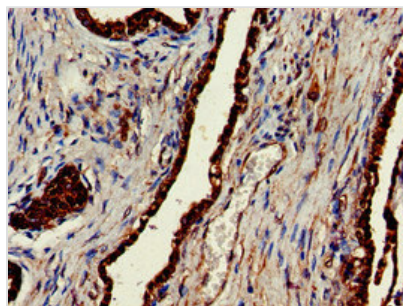




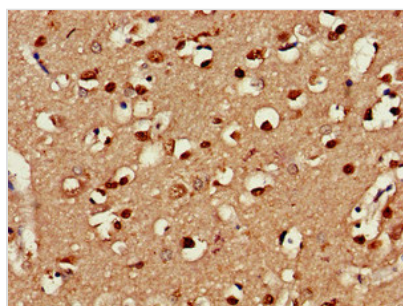
CLINT1 Antibody

Product Code	CSB-PA005552LA01HU
Storage	Upon receipt, store at -20°C or -80°C. Avoid repeated freeze.
Uniprot No.	Q14677
Immunogen	Recombinant Human Clathrin interactor 1 protein (1-625AA)
Raised In	Rabbit
Species Reactivity	Human, Mouse, Rat
Tested Applications	ELISA, WB, IHC; Recommended dilution: WB:1:200-1:3000, IHC:1:20-1:200
Form	Liquid
Conjugate	Non-conjugated
Storage Buffer	Preservative: 0.03% Proclin 300 Constituents: 50% Glycerol, 0.01M PBS, pH 7.4
Purification Method	>95%, Protein G purified
Isotype	IgG
Clonality	Polyclonal
Alias	Clathrin interactor 1 (Clathrin-interacting protein localized in the trans-Golgi region) (Clint) (Enthoprotin) (Epsin-4) (Epsin-related protein) (EpsinR), CLINT1, ENTH EPN4 EPNR KIAA0171
Immunogen Species	Homo sapiens (Human)
Research Area	Signal Transduction
Target Names	CLINT1

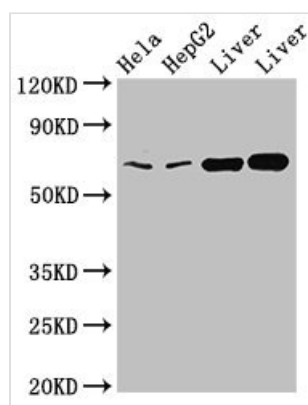
Image



Immunohistochemistry of paraffin-embedded human prostate cancer using CSB-PA005552LA01HU at dilution of 1:100



Immunohistochemistry of paraffin-embedded human brain tissue using CSB-PA005552LA01HU at dilution of 1:100



Western Blot

Positive WB detected in: Hela whole cell lysate, HepG2 whole cell lysate, Rat liver tissue, Mouse liver tissue

All lanes: CLINT1 antibody at 2 μ g/ml

Secondary

Goat polyclonal to rabbit IgG at 1/50000 dilution

Predicted band size: 69, 71 kDa

Observed band size: 69 kDa