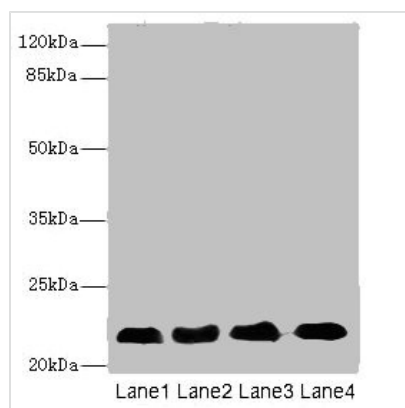




# CRIP2 Antibody

<b>Product Code</b>	CSB-PA005970DSR2HU
<b>Storage</b>	Upon receipt, store at -20°C or -80°C. Avoid repeated freeze.
<b>Uniprot No.</b>	P52943
<b>Immunogen</b>	Recombinant Human Cysteine-rich protein 2 protein (1-208AA)
<b>Raised In</b>	Rabbit
<b>Species Reactivity</b>	Human, Mouse, Rat
<b>Tested Applications</b>	ELISA, WB, IHC, IF; Recommended dilution: WB:1:500-1:2000, IHC:1:20-1:200, IF:1:50-1:200
<b>Form</b>	Liquid
<b>Conjugate</b>	Non-conjugated
<b>Storage Buffer</b>	PBS with 0.02% sodium azide, 50% glycerol, pH7.3.
<b>Purification Method</b>	Antigen Affinity Purified
<b>Isotype</b>	IgG
<b>Clonality</b>	Polyclonal
<b>Alias</b>	Cysteine-rich protein 2 (CRP-2) (Protein ESP1), CRIP2, CRP2
<b>Immunogen Species</b>	Homo sapiens (Human)
<b>Research Area</b>	Epigenetics and Nuclear Signaling
<b>Target Names</b>	CRIP2

## Image



### Western blot

All lanes: CRIP2 antibody at 5.93µg/ml

Lane 1: Rat heart tissue

Lane 2: Mouse lung tissue

Lane 3: Hela whole cell lysate

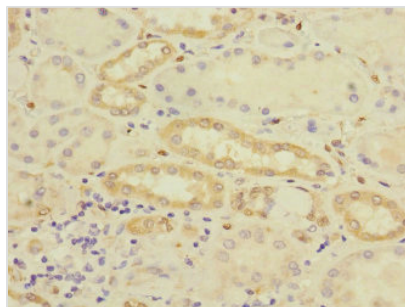
Lane 4: MCF-7 whole cell lysate

Secondary

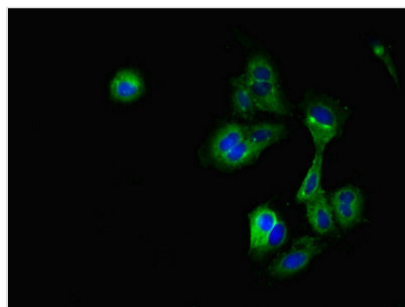
Goat polyclonal to rabbit IgG at 1/10000 dilution

Predicted band size: 23, 31 kDa

Observed band size: 23 kDa



Immunohistochemistry of paraffin-embedded human kidney tissue using CSB-PA005970DSR2HU at dilution of 1:100



Immunofluorescent analysis of HeLa cells using CSB-PA005970DSR2HU at dilution of 1:100 and Alexa Fluor 488-conjugated AffiniPure Goat Anti-Rabbit IgG(H+L)