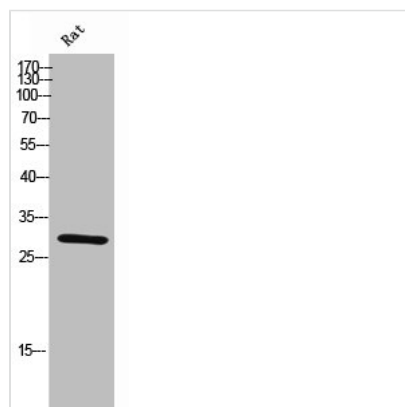




# ANP32B Antibody

<b>Product Code</b>	CSB-PA006629
<b>Storage</b>	Upon receipt, store at -20°C or -80°C. Avoid repeated freeze.
<b>Uniprot No.</b>	Q92688
<b>Immunogen</b>	Synthesized peptide derived from the N-terminal region of Human PHAPI2.
<b>Raised In</b>	Rabbit
<b>Species Reactivity</b>	Human,Mouse,Rat
<b>Tested Applications</b>	WB, ELISA; WB:1:500-1:2000, ELISA:1:40000
<b>Form</b>	Liquid
<b>Conjugate</b>	Non-conjugated
<b>Storage Buffer</b>	Liquid in PBS containing 50% glycerol, 0.5% BSA and 0.02% sodium azide.
<b>Purification Method</b>	The antibody was affinity-purified from rabbit antiserum by affinity-chromatography using epitope-specific immunogen.
<b>Isotype</b>	IgG
<b>Alias</b>	ANP32B; APRIL; PHAPI2; Acidic leucine-rich nuclear phosphoprotein 32 family member B; Acidic protein rich in leucines; Putative HLA-DR-associated protein I-2; PHAPI2; Silver-stainable protein SSP29
<b>Immunogen Species</b>	Homo sapiens (Human)
<b>Target Names</b>	ANP32B

## Image



Western Blot analysis of rat cells using PHAPI2 Polyclonal Antibody