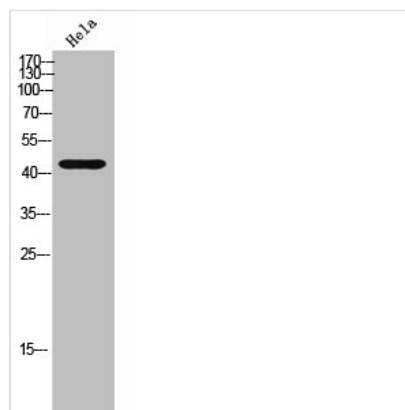




CHRM2 Antibody

Product Code	CSB-PA006807
Storage	Upon receipt, store at -20°C or -80°C. Avoid repeated freeze.
Uniprot No.	P08172
Immunogen	Synthesized peptide derived from the Internal region of Human mAChR M2.
Raised In	Rabbit
Species Reactivity	Human,Mouse,Rat
Tested Applications	WB, IF, ELISA; WB:1:500-1:2000, IF:1:200-1:1000, ELISA:1:20000
Form	Liquid
Conjugate	Non-conjugated
Storage Buffer	Liquid in PBS containing 50% glycerol, 0.5% BSA and 0.02% sodium azide.
Purification Method	The antibody was affinity-purified from rabbit antiserum by affinity-chromatography using epitope-specific immunogen.
Isotype	IgG
Alias	CHRM2; Muscarinic acetylcholine receptor M2
Immunogen Species	Homo sapiens (Human)
Target Names	CHRM2

Image



Western Blot analysis of HeLa cells using mAChR M2 Polyclonal Antibody