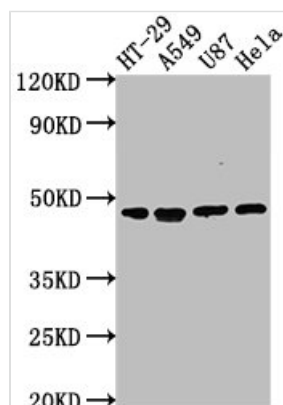




DPEP1 Antibody

Product Code	CSB-PA007123LA01HU
Storage	Upon receipt, store at -20°C or -80°C. Avoid repeated freeze.
Uniprot No.	P16444
Immunogen	Recombinant Human Dipeptidase 1 protein (23-252AA)
Raised In	Rabbit
Species Reactivity	Human
Tested Applications	ELISA, WB, IF; Recommended dilution: WB:1:1000-1:5000, IF:1:50-1:200
Form	Liquid
Conjugate	Non-conjugated
Storage Buffer	Preservative: 0.03% Proclin 300 Constituents: 50% Glycerol, 0.01M PBS, pH 7.4
Purification Method	>95%, Antigen Affinity purified & Affinity purified
Isotype	IgG
Clonality	Polyclonal
Alias	Dipeptidase 1 (EC 3.4.13.19) (Dehydropeptidase-I) (Microsomal dipeptidase) (Renal dipeptidase) (hRDP), DPEP1, MDP RDP
Immunogen Species	Homo sapiens (Human)
Research Area	Signal Transduction
Target Names	DPEP1

Image



Western Blot

Positive WB detected in: HT-29 whole cell lysate, A549 whole cell lysate, U87 whole cell lysate, HeLa whole cell lysate

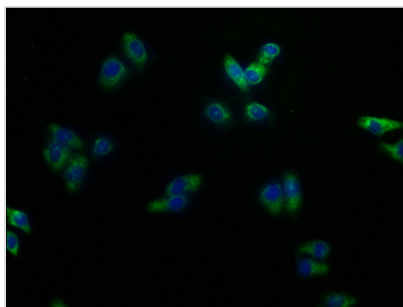
All lanes: DPEP1 antibody at 1:2000

Secondary

Goat polyclonal to rabbit IgG at 1/50000 dilution

Predicted band size: 46 kDa

Observed band size: 46 kDa



Immunofluorescence staining of HepG2 cells with CSB-PA007123LA01HU at 1:100, counter-stained with DAPI. The cells were fixed in 4% formaldehyde, permeabilized using 0.2% Triton X-100 and blocked in 10% normal Goat Serum. The cells were then incubated with the antibody overnight at 4°C. The secondary antibody was Alexa Fluor 488-conjugated AffiniPure Goat Anti-Rabbit IgG(H+L).