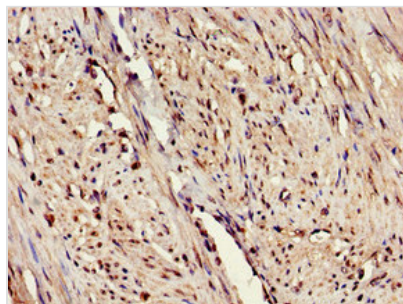




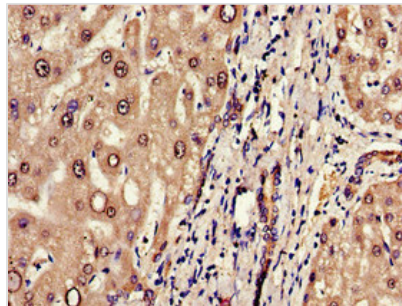
# ERAP1 Antibody

<b>Product Code</b>	CSB-PA007760LA01HU
<b>Storage</b>	Upon receipt, store at -20°C or -80°C. Avoid repeated freeze.
<b>Uniprot No.</b>	Q9NZ08
<b>Immunogen</b>	Recombinant Human Endoplasmic reticulum aminopeptidase 1 protein (642-941AA)
<b>Raised In</b>	Rabbit
<b>Species Reactivity</b>	Human
<b>Tested Applications</b>	ELISA, WB, IHC, IF; Recommended dilution: WB:1:1000-1:5000, IHC:1:20-1:200, IF:1:50-1:200
<b>Form</b>	Liquid
<b>Conjugate</b>	Non-conjugated
<b>Storage Buffer</b>	Preservative: 0.03% Proclin 300 Constituents: 50% Glycerol, 0.01M PBS, pH 7.4
<b>Purification Method</b>	>95%, Protein G purified
<b>Isotype</b>	IgG
<b>Clonality</b>	Polyclonal
<b>Alias</b>	Endoplasmic reticulum aminopeptidase 1 (EC 3.4.11.-) (ARTS-1) (Adipocyte-derived leucine aminopeptidase) (A-LAP) (Aminopeptidase PILS) (Puromycin-insensitive leucyl-specific aminopeptidase) (PILS-AP) (Type 1 tumor necrosis factor receptor shedding aminopeptidase regulator), ERAP1, APPILS ARTS1 KIAA0525
<b>Immunogen Species</b>	Homo sapiens (Human)
<b>Research Area</b>	Immunology
<b>Target Names</b>	ERAP1

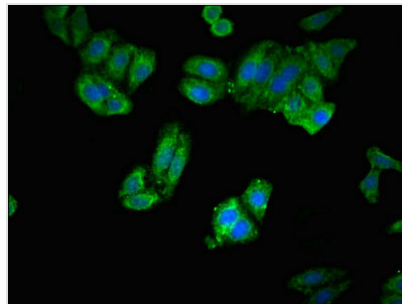
## Image



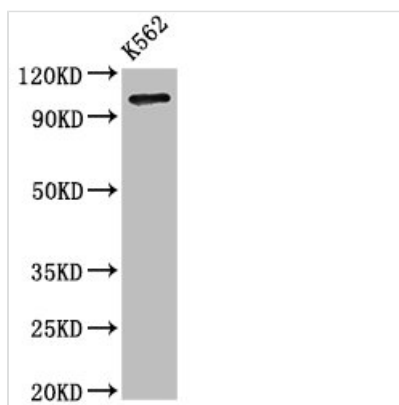
Immunohistochemistry of paraffin-embedded human endometrial cancer using CSB-PA007760LA01HU at dilution of 1:100



Immunohistochemistry of paraffin-embedded human liver tissue using CSB-PA007760LA01HU at dilution of 1:100



Immunofluorescent analysis of HepG2 cells using CSB-PA007760LA01HU at dilution of 1:100 and Alexa Fluor 488-conjugated AffiniPure Goat Anti-Rabbit IgG(H+L)



Western Blot

Positive WB detected in: K562 whole cell lysate

All lanes: ERAP1 antibody at 3.2μg/ml

Secondary

Goat polyclonal to rabbit IgG at 1/50000 dilution

Predicted band size: 108 kDa

Observed band size: 108 kDa