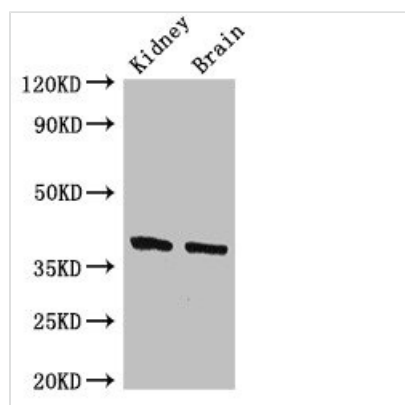




FOXE1 Antibody

Product Code	CSB-PA008811LA01HU
Storage	Upon receipt, store at -20°C or -80°C. Avoid repeated freeze.
Uniprot No.	O00358
Immunogen	Recombinant Human Forkhead box protein E1 protein (184-365AA)
Raised In	Rabbit
Species Reactivity	Human, Mouse
Tested Applications	ELISA, WB, IF; Recommended dilution: WB:1:500-1:5000, IF:1:50-1:200
Form	Liquid
Conjugate	Non-conjugated
Storage Buffer	Preservative: 0.03% Proclin 300 Constituents: 50% Glycerol, 0.01M PBS, pH 7.4
Purification Method	>95%, Protein G purified
Isotype	IgG
Clonality	Polyclonal
Alias	Forkhead box protein E1 (Forkhead box protein E2) (Forkhead-related protein FKHL15) (HFKH4) (HNF-3/fork head-like protein 5) (HFKL5) (Thyroid transcription factor 2) (TTF-2), FOXE1, FKHL15 FOXE2 TITF2 TTF2
Immunogen Species	Homo sapiens (Human)
Research Area	Epigenetics and Nuclear Signaling
Target Names	FOXE1

Image



Western Blot

Positive WB detected in: Mouse kidney tissue,
Mouse brain tissue

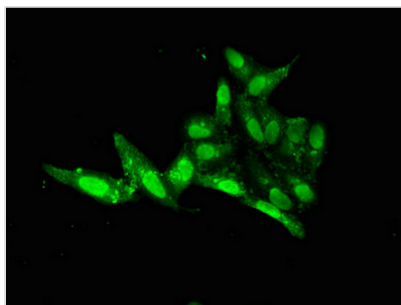
All lanes: FOXE1 antibody at 2.4μg/ml

Secondary

Goat polyclonal to rabbit IgG at 1/50000 dilution

Predicted band size: 39 kDa

Observed band size: 39 kDa



Immunofluorescent analysis of HeLa cells using CSB-PA008811LA01HU at dilution of 1:100 and Alexa Fluor 488-conjugated AffiniPure Goat Anti-Rabbit IgG(H+L)