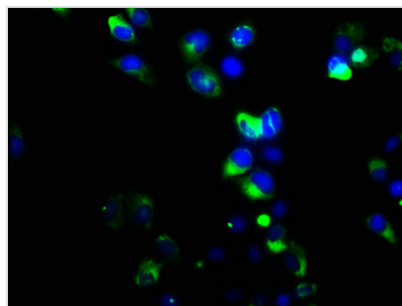




GRM6 Antibody

| | |
|----------------------------|----------------------------------------------------------------------------------|
| Product Code | CSB-PA009936LA01HU |
| Storage | Upon receipt, store at -20°C or -80°C. Avoid repeated freeze. |
| Uniprot No. | O15303 |
| Immunogen | Recombinant Human Metabotropic glutamate receptor 6 protein (370-531AA) |
| Raised In | Rabbit |
| Species Reactivity | Human |
| Tested Applications | ELISA, IF; Recommended dilution: IF:1:50-1:200 |
| Form | Liquid |
| Conjugate | Non-conjugated |
| Storage Buffer | Preservative: 0.03% Proclin 300 Constituents: 50% Glycerol, 0.01M PBS, pH 7.4 |
| Purification Method | >95%, Protein G purified |
| Isotype | IgG |
| Clonality | Polyclonal |
| Alias | Metabotropic glutamate receptor 6, mGluR6, GRM6, GPRC1F, MGLUR6 |
| Immunogen Species | Homo sapiens (Human) |
| Research Area | Neuroscience; Signal transduction |
| Target Names | GRM6 |

Image



Immunofluorescence staining of HeLa cells with CSB-PA009936LA01HU at 1:133, counter-stained with DAPI. The cells were fixed in 4% formaldehyde, permeabilized using 0.2% Triton X-100 and blocked in 10% normal Goat Serum. The cells were then incubated with the antibody overnight at 4°C. The secondary antibody was Alexa Fluor 488-conjugated AffiniPure Goat Anti-Rabbit IgG(H+L).