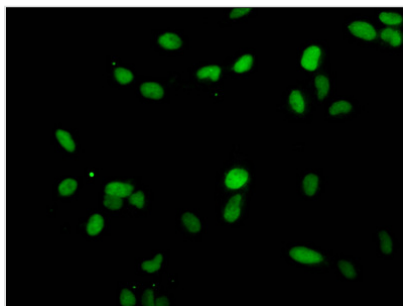




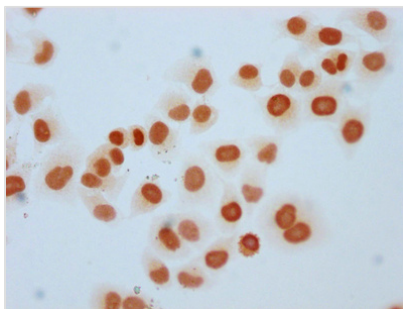
# Mono-methyl-HIST1H1E (K25) Antibody

<b>Product Code</b>	CSB-PA010380PA25me1HU
<b>Storage</b>	Upon receipt, store at -20°C or -80°C. Avoid repeated freeze.
<b>Uniprot No.</b>	P10412
<b>Immunogen</b>	Peptide sequence around site of Mono-methyl-Lys (25) derived from Human Histone H1.4
<b>Raised In</b>	Rabbit
<b>Species Reactivity</b>	Human
<b>Tested Applications</b>	ELISA, ICC, IF; Recommended dilution: ICC:1:1-1:10, IF:1:50-1:200
<b>Form</b>	Liquid
<b>Conjugate</b>	Non-conjugated
<b>Storage Buffer</b>	Preservative: 0.03% Proclin 300 Constituents: 50% Glycerol, 0.01M PBS, pH 7.4
<b>Purification Method</b>	Antigen Affinity Purified
<b>Isotype</b>	IgG
<b>Clonality</b>	Polyclonal
<b>Alias</b>	Histone H1.4 (Histone H1b) (Histone H1s-4), HIST1H1E, H1F4
<b>Immunogen Species</b>	Homo sapiens (Human)
<b>Research Area</b>	Epigenetics and Nuclear Signaling
<b>Target Names</b>	HIST1H1E

## Image



Immunofluorescent analysis of HeLa cells using CSB-PA010380PA25me1HU at dilution of 1:100 and Alexa Fluor 488-conjugated AffiniPure Goat Anti-Rabbit IgG(H+L)



Immunocytochemistry analysis of CSB-PA010380PA25me1HU diluted at 1:5 and staining in HeLa cells performed on a Leica Bond™ system. The cells were fixed in 4% formaldehyde, permeabilized using 0.2% Triton X-100 and blocked with 10% normal goat serum 30min at RT. Then primary antibody (1% BSA) was incubated at 4°C overnight. The primary is detected by a biotinylated secondary antibody and visualized using an HRP conjugated SP system.

