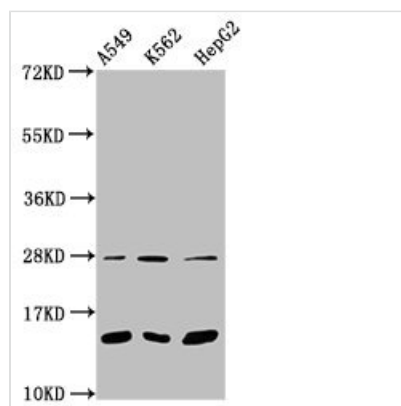




Mono-methyl-HIST1H2BC (K15) Antibody

| | |
|----------------------------|--|
| Product Code | CSB-PA010403OA15me1HU |
| Storage | Upon receipt, store at -20°C or -80°C. Avoid repeated freeze. |
| Uniprot No. | P62807 |
| Immunogen | Peptide sequence around site of Mono-methyl-Lys (15) derived from Human Histone H2B type 1-C/E/F/G/I |
| Raised In | Rabbit |
| Species Reactivity | Human |
| Tested Applications | ELISA, WB, ICC; Recommended dilution: WB:1:100-1:1000, ICC:1:10-1:100 |
| Form | Liquid |
| Conjugate | Non-conjugated |
| Storage Buffer | Preservative: 0.03% Proclin 300 Constituents: 50% Glycerol, 0.01M PBS, pH 7.4 |
| Purification Method | Antigen Affinity Purified |
| Isotype | IgG |
| Clonality | Polyclonal |
| Alias | Histone H2B type 1-C/E/F/G/I (Histone H2B.1 A) (Histone H2B.a) (H2B/a) (Histone H2B.g) (H2B/g) (Histone H2B.h) (H2B/h) (Histone H2B.k) (H2B/k) (Histone H2B.l) (H2B/l), HIST1H2BC; HIST1H2BE; HIST1H2BF; HIST1H2BG; HIST1H2BI, H2BFL; H2BFH; H2BFG; H2BFA; H2BFK |
| Immunogen Species | Homo sapiens (Human) |
| Research Area | Epigenetics and Nuclear Signaling |
| Target Names | HIST1H2BC |

Image

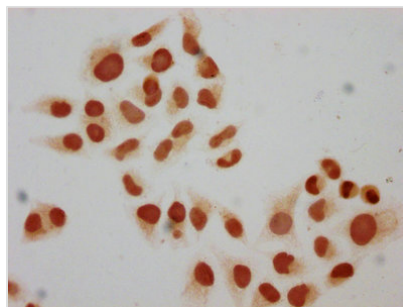


Western Blot

Positive WB detected in: A549 whole cell lysate, K562 whole cell lysate, HepG2 whole cell lysate
All lanes: HIST1H2BC antibody at 1:100

Secondary

Goat polyclonal to rabbit IgG at 1/50000 dilution
Predicted band size: 14 kDa
Observed band size: 14 kDa



Immunocytochemistry analysis of CSB-PA010403OA15me1HU diluted at 1:10 and staining in HeLa cells performed on a Leica Bond™ system. The cells were fixed in 4% formaldehyde, permeabilized using 0.2% Triton X-100 and blocked with 10% normal goat serum 30min at RT. Then primary antibody (1% BSA) was incubated at 4°C overnight. The primary is detected by a biotinylated secondary antibody and visualized using an HRP conjugated SP system.