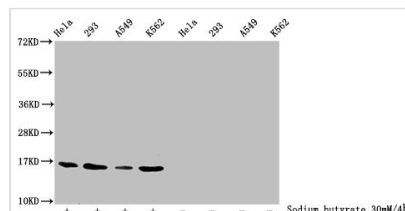




Butyrlly-HIST1H3A (K23) Antibody

| | |
|----------------------------|--|
| Product Code | CSB-PA010418OA23butHU |
| Storage | Upon receipt, store at -20°C or -80°C. Avoid repeated freeze. |
| Uniprot No. | P68431 |
| Immunogen | Peptide sequence around site of Butyrlly-Lys (23) derived from Human Histone H3.1 |
| Raised In | Rabbit |
| Species Reactivity | Human |
| Tested Applications | ELISA, WB, ICC, IF, IP, ChIP; Recommended dilution: WB:1:1000-1:5000, ICC:1:10-1:100, IF:1:10-1:100, IP:1:200-1:2000 |
| Form | Liquid |
| Conjugate | Non-conjugated |
| Storage Buffer | Preservative: 0.03% Proclin 300 Constituents: 50% Glycerol, 0.01M PBS, pH 7.4 |
| Purification Method | Antigen Affinity Purified |
| Isotype | IgG |
| Clonality | Polyclonal |
| Alias | Histone H3.1 (Histone H3/a) (Histone H3/b) (Histone H3/c) (Histone H3/d) (Histone H3/f) (Histone H3/h) (Histone H3/i) (Histone H3/j) (Histone H3/k) (Histone H3/l), HIST1H3A; HIST1H3B; HIST1H3C; HIST1H3D; HIST1H3E; HIST1H3F; HIST1H3G; HIST1H3H; HIST1H3I; HIST1H3J, H3FA; H3FL; H3FC; H3FB; H3FD; H3FI; H3FH; H3FK; H3FF; H3FJ |
| Immunogen Species | Homo sapiens (Human) |
| Research Area | Epigenetics and Nuclear Signaling |
| Target Names | HIST1H3A |

Image



Western Blot

Detected samples: Hela whole cell lysate, 293 whole cell lysate, A549 whole cell lysate, K562 whole cell lysate; Untreated (-) or treated (+) with 30mM sodium butyrate for 4h

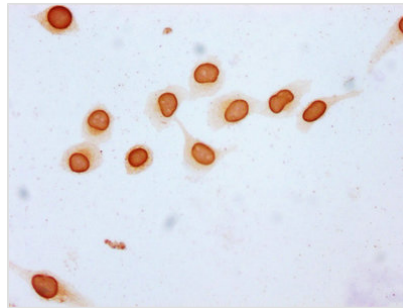
All lanes: HIST1H3A antibody at 1:2000

Secondary

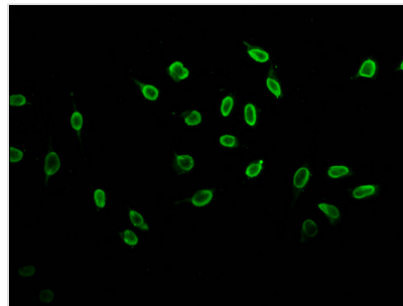
Goat polyclonal to rabbit IgG at 1/40000 dilution

Predicted band size: 16 kDa

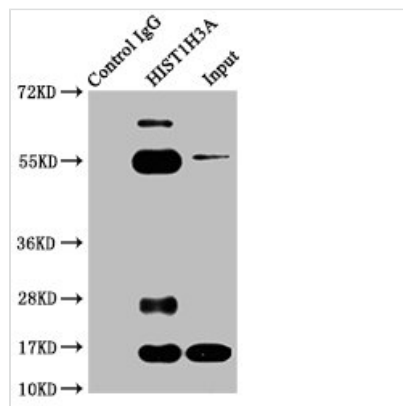
Observed band size: 16 kDa



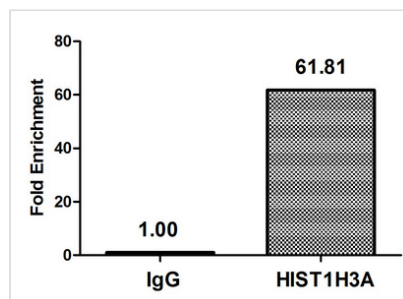
Immunocytochemistry analysis of CSB-PA010418OA23butHU diluted at 1:20 and staining in HeLa cells (treated with 30mM sodium butyrate for 4h) performed on a Leica BondTM system. The cells were fixed in 4% formaldehyde, permeabilized using 0.2% Triton X-100 and blocked with 10% normal goat serum 30min at RT. Then primary antibody (1% BSA) was incubated at 4°C overnight. The primary is detected by a biotinylated secondary antibody and visualized using an HRP conjugated SP system.



Immunofluorescence staining of HeLa cells (treated with 30mM sodium butyrate for 4h) with CSB-PA010418OA23butHU at 1:10, counter-stained with DAPI. The cells were fixed in 4% formaldehyde, permeabilized using 0.2% Triton X-100 and blocked in 10% normal Goat Serum. The cells were then incubated with the antibody overnight at 4°C. The secondary antibody was Alexa Fluor 488-conjugated AffiniPure Goat Anti-Rabbit IgG(H+L).



Immunoprecipitating H1ST1H3A in HeLa whole cell lysate
 Lane 1: Rabbit control IgG instead of CSB-PA010418OA23butHU in HeLa whole cell lysate. For western blotting, a HRP-conjugated Protein G antibody was used as the secondary antibody (1/2000)
 Lane 2: CSB-PA010418OA23butHU (5μg) + HeLa whole cell lysate (500μg)
 Lane 3: HeLa whole cell lysate (20μg)



Chromatin Immunoprecipitation HeLa (10^6 , treated with 30mM sodium butyrate for 4h) were treated with Micrococcal Nuclease, sonicated, and immunoprecipitated with 5μg anti-H1ST1H3A (CSB-PA010418OA23butHU) or a control normal rabbit IgG. The resulting ChIP DNA was quantified using real-time PCR with primers against the β-Globin promoter.