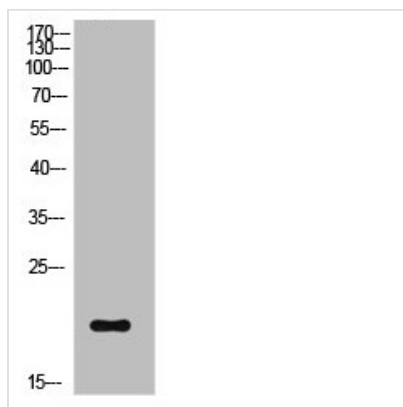




Phospho-CFL1 (S3) Antibody

Product Code	CSB-PA011283
Storage	Upon receipt, store at -20°C or -80°C. Avoid repeated freeze.
Uniprot No.	P23528
Immunogen	Synthesized peptide derived from Human Cofilin around the phosphorylation site of S3.
Raised In	Rabbit
Species Reactivity	Human,Mouse,Rat
Tested Applications	WB, IHC, ELISA; WB:1:500-1:2000, IHC:1:100-1:300, ELISA:1:10000
Form	Liquid
Conjugate	Non-conjugated
Storage Buffer	Liquid in PBS containing 50% glycerol, 0.5% BSA and 0.02% sodium azide.
Purification Method	The antibody was affinity-purified from rabbit antiserum by affinity-chromatography using epitope-specific immunogen.
Isotype	IgG
Alias	CFL1; CFL; Cofilin-1; 18 kDa phosphoprotein; p18; Cofilin; non-muscle isoform
Immunogen Species	Homo sapiens (Human)
Target Names	CFL1

Image



Western Blot analysis of NIH-3T3 cells using Phospho-Cofilin (S3) Polyclonal Antibody