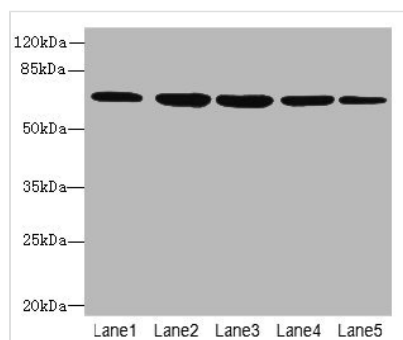




ILVBL Antibody

Product Code	CSB-PA011687LA01HU
Storage	Upon receipt, store at -20°C or -80°C. Avoid repeated freeze.
Uniprot No.	A1L0T0
Immunogen	Recombinant Human Acetolactate synthase-like protein (45-344AA)
Raised In	Rabbit
Species Reactivity	Human
Tested Applications	ELISA, WB, IHC, IF; Recommended dilution: WB:1:500-1:5000, IHC:1:20-1:200, IF:1:50-1:200
Form	Liquid
Conjugate	Non-conjugated
Storage Buffer	Preservative: 0.03% Proclin 300 Constituents: 50% Glycerol, 0.01M PBS, PH 7.4
Purification Method	>95%, Protein G purified
Isotype	IgG
Clonality	Polyclonal
Alias	Acetolactate synthase-like protein (EC 2.2.1.-) (IlvB-like protein), ILVBL, AHAS
Immunogen Species	Homo sapiens (Human)
Research Area	Cell Biology
Target Names	ILVBL

Image



Western blot

All lanes: ILVBL antibody at 4μg/ml

Lane 1: HepG2 whole cell lysate

Lane 2: Hela whole cell lysate

Lane 3: A549 whole cell lysate

Lane 4: Jurkat whole cell lysate

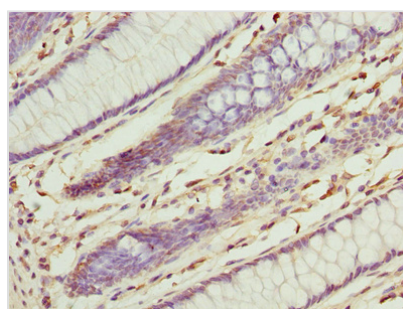
Lane 5: U87 whole cell lysate

Secondary

Goat polyclonal to rabbit IgG at 1/10000 dilution

Predicted band size: 68 kDa

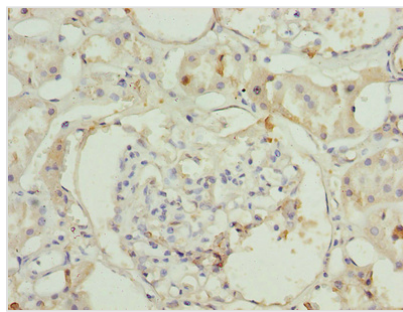
Observed band size: 68 kDa



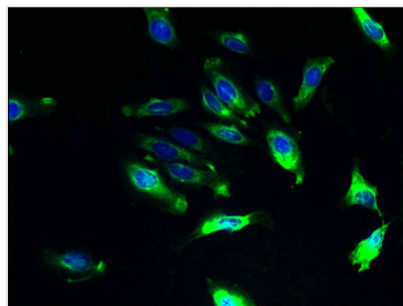
Immunohistochemistry of paraffin-embedded

human colon cancer using CSB-

PA011687LA01HU at dilution of 1:100



Immunohistochemistry of paraffin-embedded human kidney tissue using CSB-PA011687LA01HU at dilution of 1:100



Immunofluorescent analysis of HeLa cells using CSB-PA011687LA01HU at dilution of 1:100 and Alexa Fluor 488-conjugated AffiniPure Goat Anti-Rabbit IgG(H+L)