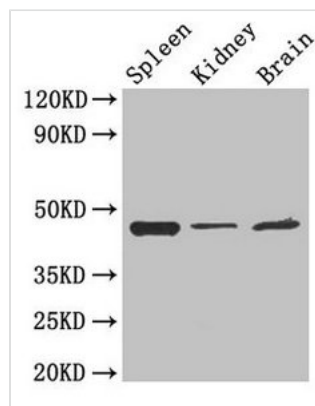




LAMP2 Antibody

Product Code	CSB-PA012740EA01HU
Storage	Upon receipt, store at -20°C or -80°C. Avoid repeated freeze.
Uniprot No.	P13473
Immunogen	Recombinant Human Lysosome-associated membrane glycoprotein 2 protein (54-268AA)
Raised In	Rabbit
Species Reactivity	Human, Mouse
Tested Applications	ELISA, WB, IHC, IF; Recommended dilution: WB:1:500-1:2000, IHC:1:20-1:200, IF:1:50-1:200
Form	Liquid
Conjugate	Non-conjugated
Storage Buffer	Preservative: 0.03% Proclin 300 Constituents: 50% Glycerol, 0.01M PBS, PH 7.4
Purification Method	>95%, Protein G purified
Isotype	IgG
Clonality	Polyclonal
Alias	Lysosome-associated membrane glycoprotein 2 (LAMP-2) (Lysosome-associated membrane protein 2) (CD107 antigen-like family member B) (LGP-96) (CD antigen CD107b), LAMP2
Immunogen Species	Homo sapiens (Human)
Research Area	Cardiovascular
Target Names	LAMP2

Image

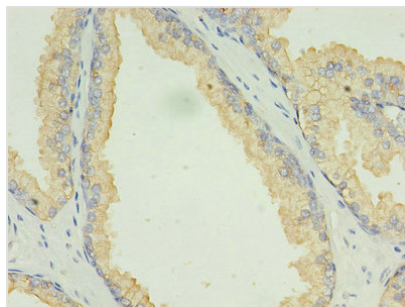


Western Blot

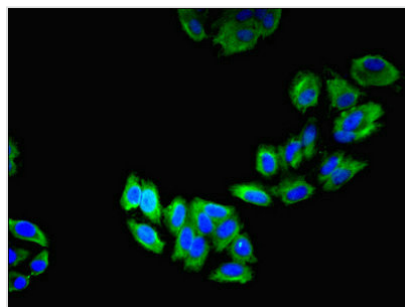
Positive WB detected in: Mouse spleen tissue, Mouse kidney tissue, Mouse brain tissue
All lanes: LAMP2 antibody at 4µg/ml

Secondary

Goat polyclonal to rabbit IgG at 1/50000 dilution
Predicted band size: 45, 46 kDa
Observed band size: 45 kDa



Immunohistochemistry of paraffin-embedded human prostate cancer using CSB-PA012740EA01HU at dilution of 1:100



Immunofluorescent analysis of HepG2 cells using CSB-PA012740EA01HU at dilution of 1:100 and Alexa Fluor 488-conjugated AffiniPure Goat Anti-Rabbit IgG(H+L)