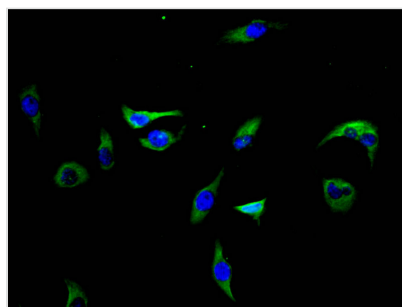




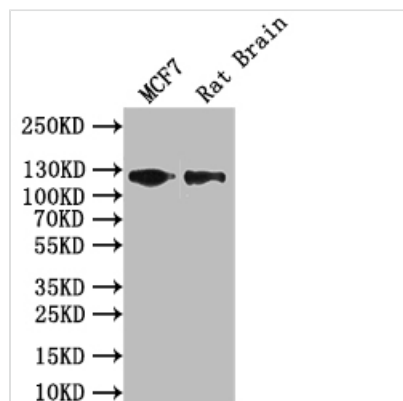
LIFR Antibody

Product Code	CSB-PA012929LA01HU
Storage	Upon receipt, store at -20°C or -80°C. Avoid repeated freeze.
Uniprot No.	P42702
Immunogen	synthesized peptide derived from the Internal region of human LIFR
Raised In	Rabbit
Species Reactivity	Human, Rat
Tested Applications	ELISA, WB, IF; Recommended dilution: WB:1:1000-1:2000, IF:1:30-1:200
Form	Liquid
Conjugate	Non-conjugated
Storage Buffer	Liquid in PBS containing 50% glycerol, 0.5% BSA and 0.02% sodium azide
Purification Method	Antigen Affinity purified
Isotype	IgG
Clonality	Polyclonal
Product Type	Polyclonal Antibody
Immunogen Species	Homo sapiens (Human)
Research Area	Immunology
Target Names	LIFR

Image



Immunofluorescence staining of A549 cells with CSB-PA012929LA01HU at 1:30, counter-stained with DAPI. The cells were fixed in 4% formaldehyde, permeabilized using 0.2% Triton X-100 and blocked in 10% normal Goat Serum. The cells were then incubated with the antibody overnight at 4°C. The secondary antibody was Alexa Fluor 488-conjugated AffiniPure Goat Anti-Rabbit IgG(H+L).



Western Blot
Positive WB detected in: MCF7 whole cell lysate, Rat Brain tissue lysate
All lanes: LIFR antibody at 1:1000
Secondary
Goat polyclonal to rabbit IgG at 1/50000 dilution
Predicted band size: 123 kDa
Observed band size: 123 kDa