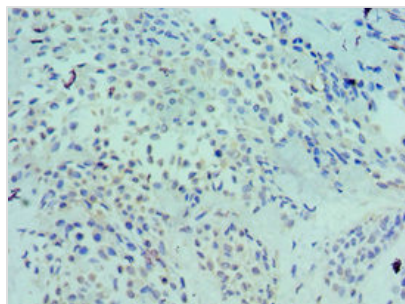




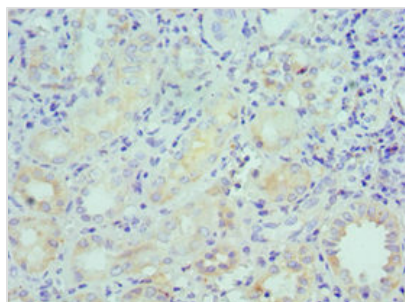
LRP6 Antibody

| | |
|----------------------------|---|
| Product Code | CSB-PA013102ESR2HU |
| Storage | Upon receipt, store at -20°C or -80°C. Avoid repeated freeze. |
| Uniprot No. | O75581 |
| Immunogen | Recombinant Human Low-density lipoprotein receptor-related protein 6 protein (20-150AA) |
| Raised In | Rabbit |
| Species Reactivity | Human |
| Tested Applications | ELISA, IHC; Recommended dilution: IHC:1:20-1:200 |
| Form | Liquid |
| Conjugate | Non-conjugated |
| Storage Buffer | PBS with 0.02% sodium azide, 50% glycerol, pH7.3. |
| Purification Method | Antigen Affinity Purified |
| Isotype | IgG |
| Clonality | Polyclonal |
| Alias | Low-density lipoprotein receptor-related protein 6 (LRP-6), LRP6 |
| Immunogen Species | Homo sapiens (Human) |
| Research Area | Signal Transduction |
| Target Names | LRP6 |

Image



Immunohistochemistry of paraffin-embedded human breast cancer using CSB-PA013102ESR2HU at dilution of 1:100



Immunohistochemistry of paraffin-embedded human kidney tissue using CSB-PA013102ESR2HU at dilution of 1:100