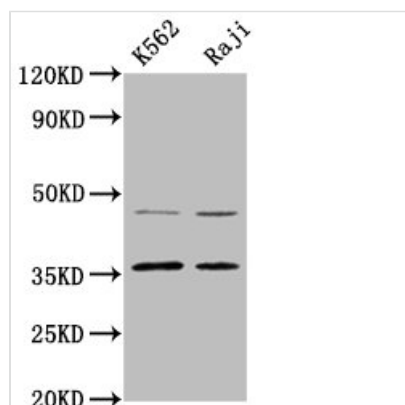




MAGEA2 Antibody

Product Code	CSB-PA013327LA01HU
Storage	Upon receipt, store at -20°C or -80°C. Avoid repeated freeze.
Uniprot No.	P43356
Immunogen	Recombinant Human Melanoma-associated antigen 2 protein (1-104AA)
Raised In	Rabbit
Species Reactivity	Human
Tested Applications	ELISA, WB; Recommended dilution: WB:1:500-1:5000
Form	Liquid
Conjugate	Non-conjugated
Storage Buffer	Preservative: 0.03% Proclin 300 Constituents: 50% Glycerol, 0.01M PBS, pH 7.4
Purification Method	>95%, Protein G purified
Isotype	IgG
Clonality	Polyclonal
Alias	Melanoma-associated antigen 2, Cancer/testis antigen 1.2, CT1.2, MAGE-2 antigen, MAGEA2, MAGE2, MAGEA2A, AND, MAGEA2B, MAGE2, MAGEA2
Immunogen Species	Homo sapiens (Human)
Research Area	Cancer; Immunology
Target Names	MAGEA2

Image



Western Blot

Positive WB detected in: K562 whole cell lysate, Raji whole cell lysate

All lanes: MAGEA2 antibody at 4.4µg/ml

Secondary

Goat polyclonal to rabbit IgG at 1/50000 dilution

Predicted band size: 36 kDa

Observed band size: 36 kDa