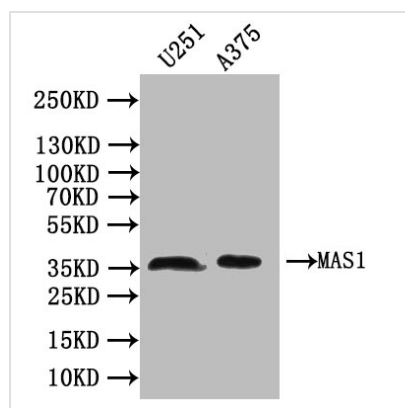




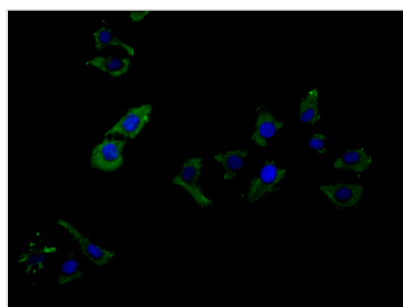
# MAS1 Antibody

<b>Product Code</b>	CSB-PA013505LA01HU
<b>Storage</b>	Upon receipt, store at -20°C or -80°C. Avoid repeated freeze.
<b>Uniprot No.</b>	P04201
<b>Immunogen</b>	Recombinant Human Proto-oncogene Mas protein (285-325AA)
<b>Raised In</b>	Rabbit
<b>Species Reactivity</b>	Human
<b>Tested Applications</b>	ELISA, WB, IF; Recommended dilution: WB:1:1000-1:5000, IF:1:100-1:300
<b>Form</b>	Liquid
<b>Conjugate</b>	Non-conjugated
<b>Storage Buffer</b>	Preservative: 0.03% Proclin 300 Constituents: 50% Glycerol, 0.01M PBS, PH 7.4
<b>Purification Method</b>	>95%, Protein G purified
<b>Isotype</b>	IgG
<b>Clonality</b>	Polyclonal
<b>Product Type</b>	Polyclonal Antibody
<b>Immunogen Species</b>	Homo sapiens (Human)
<b>Research Area</b>	Signal Transduction
<b>Target Names</b>	MAS1

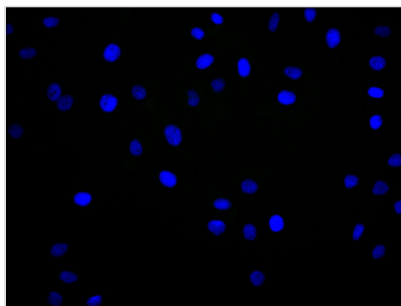
## Image



Western Blot  
Positive WB detected in:U251 whole cell lysate,  
A375 whole cell lysate  
All lanes: MAS1 antibody at 1:1000  
Secondary  
Goat polyclonal to rabbit IgG at 1/50000 dilution  
Predicted band size: 38 kDa  
Observed band size: 38 kDa



Immunofluorescence staining of HeLa cell with  
CSB-PA013505LA01HU at 1:180, counter-  
stained with DAPI. The cells were fixed in 4%  
formaldehyde and blocked in 10% normal Goat  
Serum. The cells were then incubated with the  
antibody overnight at 4C. The secondary  
antibody was Alexa Fluor 488-conjugated  
AffiniPure Goat Anti-Rabbit IgG(H+L).



Immunofluorescence staining of HeLa cell with 5% goat serum, counter-stained with DAPI. The cells were fixed in 4% formaldehyde and blocked in 10% normal Goat Serum. The cells were then incubated with the antibody overnight at 4C. The secondary antibody was Alexa Fluor 488-conjugated AffiniPure Goat Anti-Rabbit IgG(H+L).