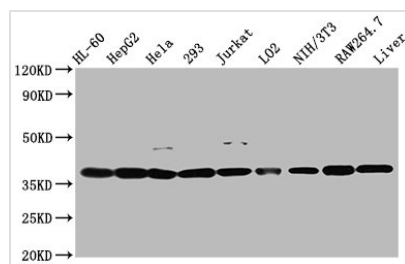




MDH1 Antibody

Product Code	CSB-PA013621EA01HU
Storage	Upon receipt, store at -20°C or -80°C. Avoid repeated freeze.
Uniprot No.	P40925
Immunogen	Recombinant Human Malate dehydrogenase, cytoplasmic protein (1-334AA)
Raised In	Rabbit
Species Reactivity	Human, Mouse
Tested Applications	ELISA, WB, IHC, IF; Recommended dilution: WB:1:500-1:5000, IHC:1:200-1:500, IF:1:50-1:200
Form	Liquid
Conjugate	Non-conjugated
Storage Buffer	Preservative: 0.03% Proclin 300 Constituents: 50% Glycerol, 0.01M PBS, pH 7.4
Purification Method	>95%, Protein G purified
Isotype	IgG
Clonality	Polyclonal
Alias	Malate dehydrogenase, cytoplasmic (EC 1.1.1.37) (Cytosolic malate dehydrogenase) (Diiodophenylpyruvate reductase) (EC 1.1.1.96), MDH1, MDHA
Immunogen Species	Homo sapiens (Human)
Research Area	Signal Transduction
Target Names	MDH1

Image

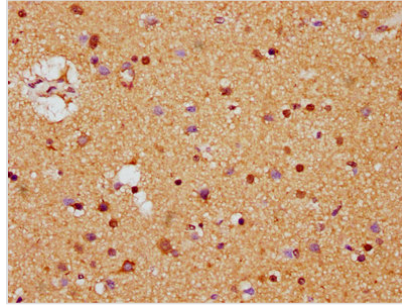


Western Blot

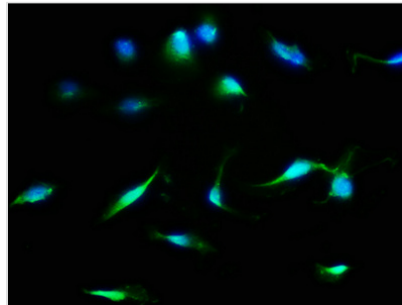
Positive WB detected in: HL60 whole cell lysate, HepG2 whole cell lysate, HeLa whole cell lysate, 293 whole cell lysate, Jurkat whole cell lysate, LO2 whole cell lysate, NIH/3T3 whole cell lysate, RAW264.7 whole cell lysate, Mouse liver tissue
All lanes: MDH1 antibody at 2.6µg/ml

Secondary

Goat polyclonal to rabbit IgG at 1/50000 dilution
Predicted band size: 37, 28, 39 kDa
Observed band size: 37 kDa



IHC image of CSB-PA013621EA01HU diluted at 1:400 and staining in paraffin-embedded human brain tissue performed on a Leica Bond™ system. After dewaxing and hydration, antigen retrieval was mediated by high pressure in a citrate buffer (pH 6.0). Section was blocked with 10% normal goat serum 30min at RT. Then primary antibody (1% BSA) was incubated at 4°C overnight. The primary is detected by a biotinylated secondary antibody and visualized using an HRP conjugated SP system.



Immunofluorescence staining of U251 cells with CSB-PA013621EA01HU at 1:133, counter-stained with DAPI. The cells were fixed in 4% formaldehyde, permeabilized using 0.2% Triton X-100 and blocked in 10% normal Goat Serum. The cells were then incubated with the antibody overnight at 4°C. The secondary antibody was Alexa Fluor 488-conjugated AffiniPure Goat Anti-Rabbit IgG(H+L).