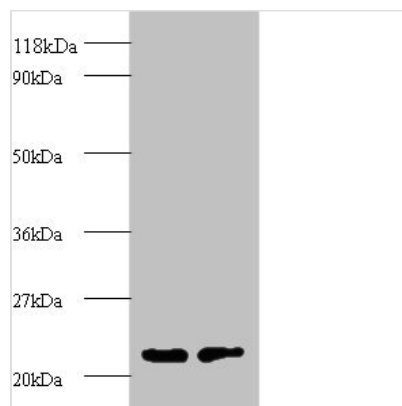




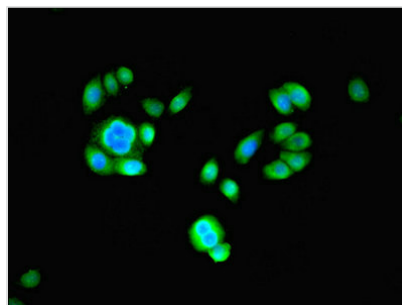
PSMB2 Antibody

Product Code	CSB-PA01385A0Rb
Storage	Upon receipt, store at -20°C or -80°C. Avoid repeated freeze.
Uniprot No.	P49721
Immunogen	Recombinant Human Proteasome subunit beta type-2 protein (1-201AA)
Raised In	Rabbit
Species Reactivity	Human, Mouse
Tested Applications	ELISA, WB, IHC, IF; Recommended dilution: WB:1:500-1:2000, IHC:1:20-1:200, IF:1:50-1:200
Form	Liquid
Conjugate	Non-conjugated
Storage Buffer	Preservative: 0.03% Proclin 300 Constituents: 50% Glycerol, 0.01M PBS, PH 7.4
Purification Method	>95%, Protein G purified
Isotype	IgG
Clonality	Polyclonal
Alias	Proteasome subunit beta type-2 (EC 3.4.25.1) (Macropain subunit C7-I) (Multicatalytic endopeptidase complex subunit C7-I) (Proteasome component C7-I), PSMB2
Immunogen Species	Homo sapiens (Human)
Research Area	Cell Biology
Target Names	PSMB2

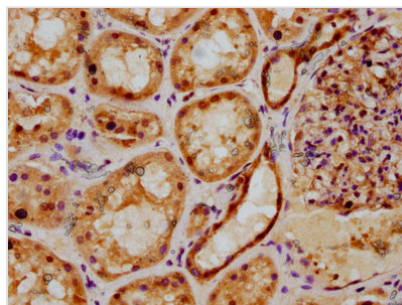
Image



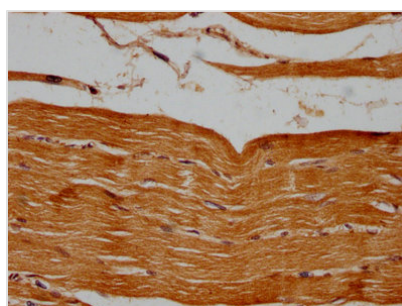
Western blot
All lanes: proteasome subunit beta type-2 antibody at 2μg/ml
Lane 1: EC109 whole cell lysate
Lane 2: 293T whole cell lysate
Secondary
Goat polyclonal to rabbit IgG at 1/15000 dilution
Predicted band size: 23 kDa
Observed band size: 23 kDa



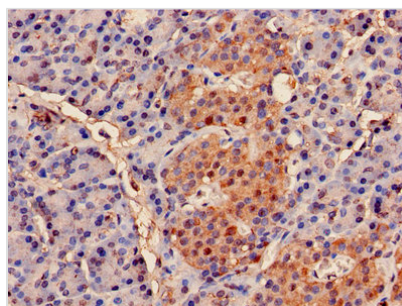
Immunofluorescent analysis of PC-3 cells using CSB-PA01385A0Rb at dilution of 1:100 and Alexa Fluor 488-conjugated AffiniPure Goat Anti-Rabbit IgG(H+L)



IHC image of CSB-PA01385A0Rb diluted at 1:500 and staining in paraffin-embedded human kidney tissue performed on a Leica Bond™ system. After dewaxing and hydration, antigen retrieval was mediated by high pressure in a citrate buffer (pH 6.0). Section was blocked with 10% normal goat serum 30min at RT. Then primary antibody (1% BSA) was incubated at 4°C overnight. The primary is detected by a biotinylated secondary antibody and visualized using an HRP conjugated SP system.



IHC image of CSB-PA01385A0Rb diluted at 1:500 and staining in paraffin-embedded human skeletal muscle tissue performed on a Leica Bond™ system. After dewaxing and hydration, antigen retrieval was mediated by high pressure in a citrate buffer (pH 6.0). Section was blocked with 10% normal goat serum 30min at RT. Then primary antibody (1% BSA) was incubated at 4°C overnight. The primary is detected by a biotinylated secondary antibody and visualized using an HRP conjugated SP system.



Immunohistochemistry of paraffin-embedded human pancreatic tissue using CSB-PA01385A0Rb at dilution of 1:100