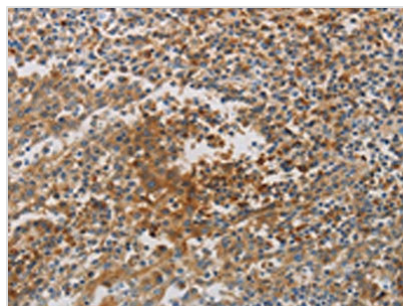




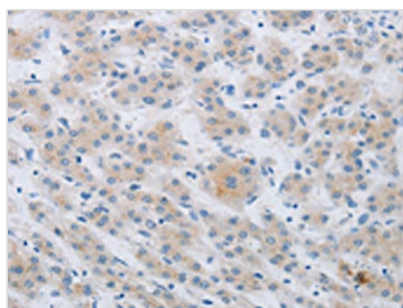
CKMT1A Antibody

Product Code	CSB-PA014412
Storage	Upon receipt, store at -20°C or -80°C. Avoid repeated freeze.
Uniprot No.	P12532
Immunogen	Synthetic peptide of Human CKMT1A/CKMT1B
Raised In	Rabbit
Species Reactivity	Human,Mouse
Tested Applications	ELISA,WB,IHC;ELISA:1:1000-1:5000,WB:1:1000-1:3000,IHC:1:50-1:200
Form	Liquid
Conjugate	Non-conjugated
Storage Buffer	-20°C, pH7.4 PBS, 0.05% NaN ₃ , 40% Glycerol
Purification Method	Antigen affinity purification
Isotype	IgG
Immunogen Species	Homo sapiens (Human)
Target Names	CKMT1A

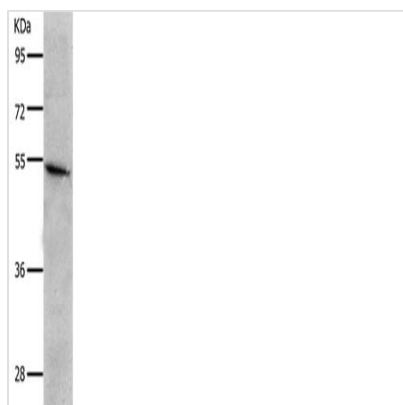
Image



The image on the left is immunohistochemistry of paraffin-embedded Human tonsil tissue using CSB-PA014412(CKMT1A/CKMT1B Antibody) at dilution 1/80, on the right is treated with synthetic peptide. (Original magnification: x200)



The image on the left is immunohistochemistry of paraffin-embedded Human liver cancer tissue using CSB-PA014412(CKMT1A/CKMT1B Antibody) at dilution 1/80, on the right is treated with synthetic peptide. (Original magnification: x200)



Gel: 10%SDS-PAGE, Lysate: 30 μ g, Lane:
Mouse crassum intestinum tissue, Primary
antibody: CSB-PA014412(CKMT1A/CKMT1B
Antibody) at dilution 1/1500, Secondary
antibody: Goat anti rabbit IgG at 1/8000 dilution,
Exposure time: 1 minute