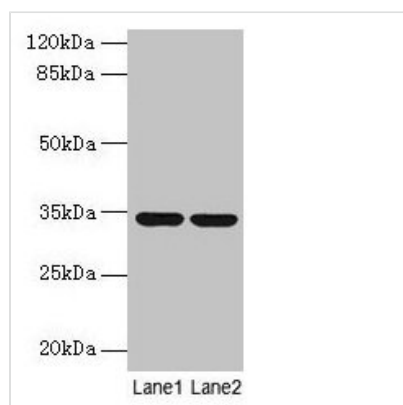




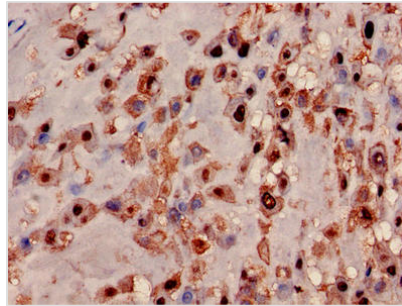
MRPL19 Antibody

Product Code	CSB-PA014826EA01HU
Storage	Upon receipt, store at -20°C or -80°C. Avoid repeated freeze.
Uniprot No.	P49406
Immunogen	Recombinant Human 39S ribosomal protein L19, mitochondrial protein (1-292AA)
Raised In	Rabbit
Species Reactivity	Human, Mouse
Tested Applications	ELISA, WB, IHC, IF; Recommended dilution: WB:1:500-1:5000, IHC:1:20-1:200, IF:1:50-1:200
Form	Liquid
Conjugate	Non-conjugated
Storage Buffer	Preservative: 0.03% Proclin 300 Constituents: 50% Glycerol, 0.01M PBS, PH 7.4
Purification Method	>95%, Protein G purified
Isotype	IgG
Clonality	Polyclonal
Alias	39S ribosomal protein L19, mitochondrial (L19mt) (MRP-L19) (39S ribosomal protein L15, mitochondrial) (L15mt) (MRP-L15) (Mitochondrial large ribosomal subunit protein bL19m), MRPL19, KIAA0104 MRPL15
Immunogen Species	Homo sapiens (Human)
Research Area	Tags & Cell Markers
Target Names	MRPL19

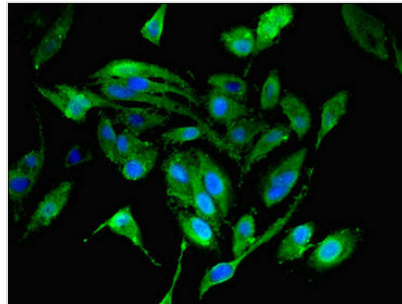
Image



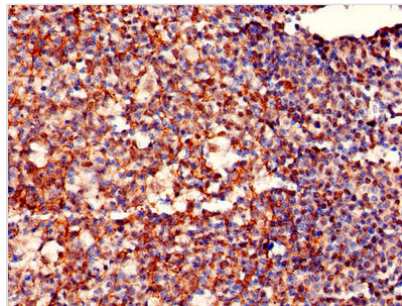
Western blot
All lanes: MRPL19 antibody at 2µg/ml
Lane 1: MCF-7 whole cell lysate
Lane 2: Mouse liver tissue
Secondary
Goat polyclonal to rabbit IgG at 1/10000 dilution
Predicted band size: 34 kDa
Observed band size: 34 kDa



Immunohistochemistry of paraffin-embedded human placenta tissue using CSB-PA014826EA01HU at dilution of 1:100



Immunofluorescent analysis of Hela cells using CSB-PA014826EA01HU at dilution of 1:100 and Alexa Fluor 488-conjugated AffiniPure Goat Anti-Rabbit IgG(H+L)



Immunohistochemistry of paraffin-embedded human tonsil tissue using CSB-PA014826EA01HU at dilution of 1:100