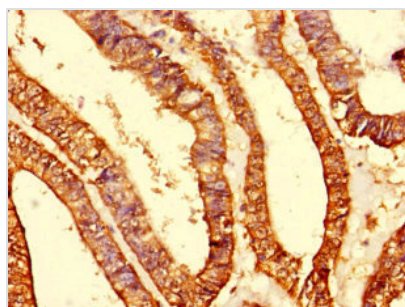




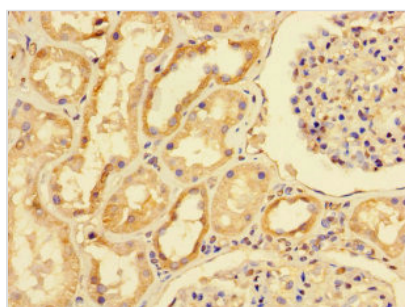
# MRPS10 Antibody

<b>Product Code</b>	CSB-PA014875LA01HU
<b>Storage</b>	Upon receipt, store at -20°C or -80°C. Avoid repeated freeze.
<b>Uniprot No.</b>	P82664
<b>Immunogen</b>	Recombinant Human 28S ribosomal protein S10, mitochondrial protein (1-201AA)
<b>Raised In</b>	Rabbit
<b>Species Reactivity</b>	Human
<b>Tested Applications</b>	ELISA, IHC; Recommended dilution: IHC:1:20-1:200
<b>Form</b>	Liquid
<b>Conjugate</b>	Non-conjugated
<b>Storage Buffer</b>	Preservative: 0.03% Proclin 300 Constituents: 50% Glycerol, 0.01M PBS, PH 7.4
<b>Purification Method</b>	>95%, Protein G purified
<b>Isotype</b>	IgG
<b>Clonality</b>	Polyclonal
<b>Alias</b>	28S ribosomal protein S10, mitochondrial (MRP-S10) (S10mt) (Mitochondrial small ribosomal subunit protein uS10m), MRPS10
<b>Immunogen Species</b>	Homo sapiens (Human)
<b>Research Area</b>	Others
<b>Target Names</b>	MRPS10

## Image



Immunohistochemistry of paraffin-embedded human endometrial cancer using CSB-PA014875LA01HU at dilution of 1:100



Immunohistochemistry of paraffin-embedded human kidney tissue using CSB-PA014875LA01HU at dilution of 1:100