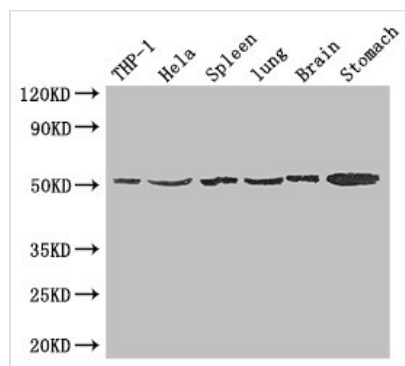




# MSR1 Antibody

<b>Product Code</b>	CSB-PA015050LA01HU
<b>Storage</b>	Upon receipt, store at -20°C or -80°C. Avoid repeated freeze.
<b>Uniprot No.</b>	P21757
<b>Immunogen</b>	Recombinant Human Macrophage scavenger receptor types I and II protein (271-446AA)
<b>Raised In</b>	Rabbit
<b>Species Reactivity</b>	Human, Mouse
<b>Tested Applications</b>	ELISA, WB, IHC; Recommended dilution: WB:1:2000-1:10000, IHC:1:20-1:200
<b>Form</b>	Liquid
<b>Conjugate</b>	Non-conjugated
<b>Storage Buffer</b>	Preservative: 0.03% Proclin 300 Constituents: 50% Glycerol, 0.01M PBS, PH 7.4
<b>Purification Method</b>	>95%, Protein G purified
<b>Isotype</b>	IgG
<b>Clonality</b>	Polyclonal
<b>Alias</b>	Macrophage scavenger receptor types I and II (Macrophage acetylated LDL receptor I and II) (Scavenger receptor class A member 1) (CD antigen CD204), MSR1, SCARA1
<b>Immunogen Species</b>	Homo sapiens (Human)
<b>Research Area</b>	Immunology
<b>Target Names</b>	MSR1

## Image



### Western Blot

Positive WB detected in: THP-1 whole cell lysate, Hela whole cell lysate, Mouse spleen tissue, Mouse lung tissue, Mouse brain tissue, Mouse stomach tissue

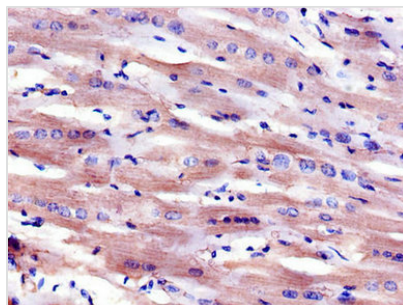
All lanes: MSR1 antibody at 1.5µg/ml

### Secondary

Goat polyclonal to rabbit IgG at 1/50000 dilution

Predicted band size: 50, 40, 43 kDa

Observed band size: 50 kDa



Immunohistochemistry of paraffin-embedded human heart tissue using CSB-PA015050LA01HU at dilution of 1:100