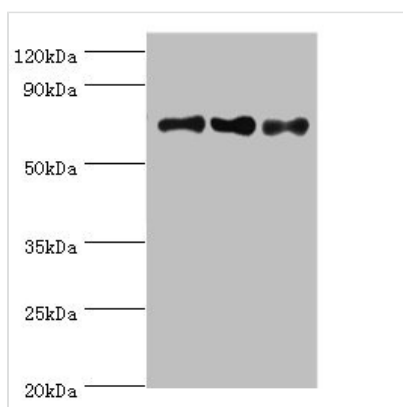




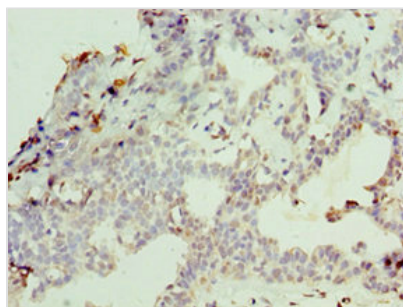
NCL Antibody

Product Code	CSB-PA015535DSR2HU
Storage	Upon receipt, store at -20°C or -80°C. Avoid repeated freeze.
Uniprot No.	P19338
Immunogen	Recombinant Human Nucleolin protein (411-710AA)
Raised In	Rabbit
Species Reactivity	Human
Tested Applications	ELISA, WB, IHC; Recommended dilution: WB:1:200-1:1000, IHC:1:20-1:200
Form	Liquid
Conjugate	Non-conjugated
Storage Buffer	PBS with 0.02% sodium azide, 50% glycerol, pH7.3.
Purification Method	Antigen Affinity Purified
Isotype	IgG
Clonality	Polyclonal
Alias	Nucleolin (Protein C23), NCL
Immunogen Species	Homo sapiens (Human)
Research Area	Tags & Cell Markers
Target Names	NCL

Image



Western blot
 All lanes: NCL antibody at 8μg/ml
 Lane 1: Jurkat whole cell lysate
 Lane 2: Hela whole cell lysate
 Lane 3: 293T whole cell lysate
 Secondary
 Goat polyclonal to rabbit IgG at 1/10000 dilution
 Predicted band size: 77 kDa
 Observed band size: 77 kDa



Immunohistochemistry of paraffin-embedded human breast cancer using CSB-PA015535DSR2HU at dilution of 1:100