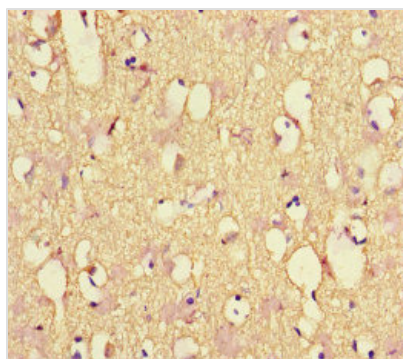




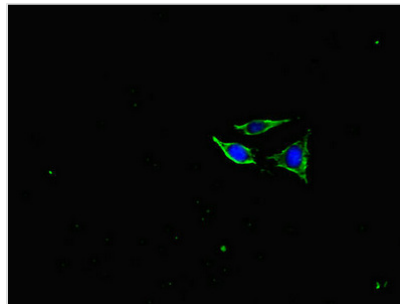
NEFL Antibody

| | |
|----------------------------|---|
| Product Code | CSB-PA015688LA01HU |
| Storage | Upon receipt, store at -20°C or -80°C. Avoid repeated freeze. |
| Uniprot No. | P07196 |
| Immunogen | Recombinant Human Neurofilament light polypeptide protein (128-271AA) |
| Raised In | Rabbit |
| Species Reactivity | Human |
| Tested Applications | ELISA, IHC, IF, IP; Recommended dilution: IHC:1:20-1:200, IF:1:50-1:200, IP:1:200-1:2000 |
| Form | Liquid |
| Conjugate | Non-conjugated |
| Storage Buffer | Preservative: 0.03% Proclin 300 Constituents: 50% Glycerol, 0.01M PBS, PH 7.4 |
| Purification Method | >95%, Protein G purified |
| Isotype | IgG |
| Clonality | Polyclonal |
| Alias | Neurofilament light polypeptide (NF-L) (68 kDa neurofilament protein) (Neurofilament triplet L protein), NEFL, NF68 NFL |
| Immunogen Species | Homo sapiens (Human) |
| Research Area | Neuroscience |
| Target Names | NEFL |

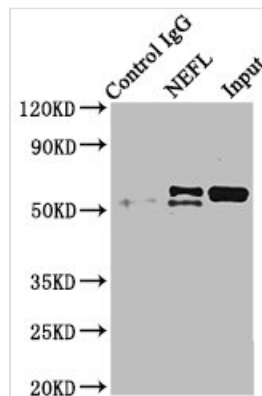
Image



Immunohistochemistry of paraffin-embedded human brain tissue using CSB-PA015688LA01HU at dilution of 1:100



Immunofluorescent analysis of SH-SY5Y cells using CSB-PA015688LA01HU at dilution of 1:100 and Alexa Fluor 488-conjugated AffiniPure Goat Anti-Rabbit IgG(H+L)



Immunoprecipitating NEFL in mouse brain tissue
Lane 1: Rabbit control IgG instead of CSB-PA015688LA01HU in mouse brain tissue. For western blotting, a HRP-conjugated Protein G antibody was used as the secondary antibody (1/2000)

Lane 2: CSB-PA015688LA01HU (8μg) + Mouse brain tissue (500μg)

Lane 3: Mouse brain tissue (10μg)