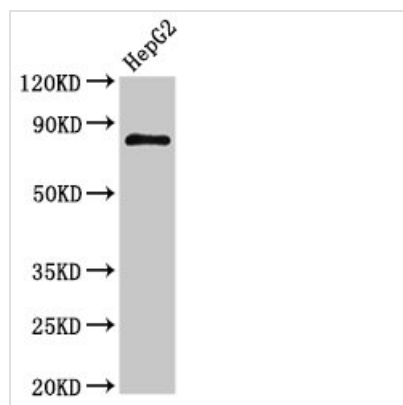




# NR3C1 Antibody

<b>Product Code</b>	CSB-PA016059LA01HU
<b>Storage</b>	Upon receipt, store at -20°C or -80°C. Avoid repeated freeze.
<b>Uniprot No.</b>	P04150
<b>Immunogen</b>	Recombinant Human Glucocorticoid receptor protein (1-190AA)
<b>Raised In</b>	Rabbit
<b>Species Reactivity</b>	Human
<b>Tested Applications</b>	ELISA, WB, IHC, IF, IP; Recommended dilution: WB:1:500-1:5000, IHC:1:20-1:200, IF:1:50-1:200, IP:1:200-1:2000
<b>Form</b>	Liquid
<b>Conjugate</b>	Non-conjugated
<b>Storage Buffer</b>	Preservative: 0.03% Proclin 300 Constituents: 50% Glycerol, 0.01M PBS, pH 7.4
<b>Purification Method</b>	>95%, Protein G purified
<b>Isotype</b>	IgG
<b>Clonality</b>	Polyclonal
<b>Alias</b>	Glucocorticoid receptor (GR) (Nuclear receptor subfamily 3 group C member 1), NR3C1, GRL
<b>Immunogen Species</b>	Homo sapiens (Human)
<b>Research Area</b>	Signal Transduction
<b>Target Names</b>	NR3C1

## Image



### Western Blot

Positive WB detected in: HepG2 whole cell lysate

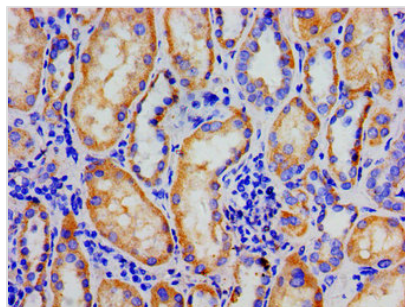
All lanes: NR3C1 antibody at 3µg/ml

### Secondary

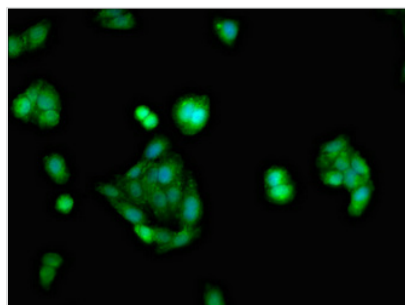
Goat polyclonal to rabbit IgG at 1/50000 dilution

Predicted band size: 86, 82, 65, 61, 83, 79, 77, 76, 52, 51, 50 kDa

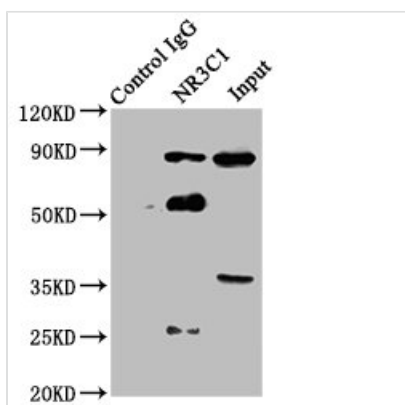
Observed band size: 86 kDa



Immunohistochemistry of paraffin-embedded human kidney tissue using CSB-PA016059LA01HU at dilution of 1:100



Immunofluorescent analysis of HepG2 cells using CSB-PA016059LA01HU at dilution of 1:100 and Alexa Fluor 488-conjugated AffiniPure Goat Anti-Rabbit IgG(H+L)



Immunoprecipitating NR3C1 in Hela whole cell lysate

Lane 1: Rabbit control IgG instead of CSB-PA016059LA01HU in Hela whole cell lysate. For western blotting, a HRP-conjugated Protein G antibody was used as the secondary antibody (1/5000)

Lane 2: CSB-PA016059LA01HU (8μg) + Hela whole cell lysate (500μg)

Lane 3: Hela whole cell lysate (20μg)