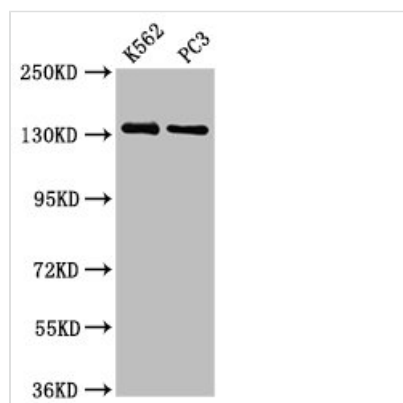




NRDC Antibody

| | |
|----------------------------|--|
| Product Code | CSB-PA016075LA01HU |
| Storage | Upon receipt, store at -20°C or -80°C. Avoid repeated freeze. |
| Uniprot No. | O43847 |
| Immunogen | Recombinant Human Nardilysin protein (32-113AA) |
| Raised In | Rabbit |
| Species Reactivity | Human |
| Tested Applications | ELISA, WB, IF; Recommended dilution: WB:1:500-1:5000, IF:1:50-1:200 |
| Form | Liquid |
| Conjugate | Non-conjugated |
| Storage Buffer | Preservative: 0.03% Proclin 300 Constituents: 50% Glycerol, 0.01M PBS, pH 7.4 |
| Purification Method | >95%, Protein G purified |
| Isotype | IgG |
| Clonality | Polyclonal |
| Alias | Nardilysin (EC 3.4.24.61) (N-arginine dibasic convertase) (NRD convertase) (NRD-C) (Nardilysin convertase), NRDC, NRD1 |
| Immunogen Species | Homo sapiens (Human) |
| Research Area | Cell Biology |
| Target Names | NRDC |

Image



Western Blot

Positive WB detected in: K562 whole cell lysate, PC-3 whole cell lysate

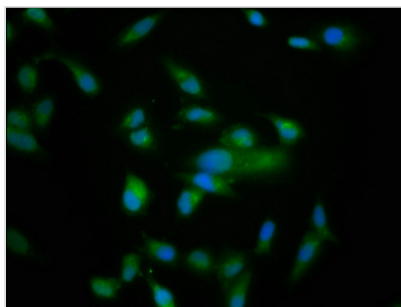
All lanes: NRDC antibody at 3.73µg/ml

Secondary

Goat polyclonal to rabbit IgG at 1/50000 dilution

Predicted band size: 132, 140 kDa

Observed band size: 132 kDa



Immunofluorescence staining of HeLa cells with CSB-PA016075LA01HU at 1:166, counter-stained with DAPI. The cells were fixed in 4% formaldehyde, permeabilized using 0.2% Triton X-100 and blocked in 10% normal Goat Serum. The cells were then incubated with the antibody overnight at 4°C. The secondary antibody was Alexa Fluor 488-conjugated AffiniPure Goat Anti-Rabbit IgG(H+L).