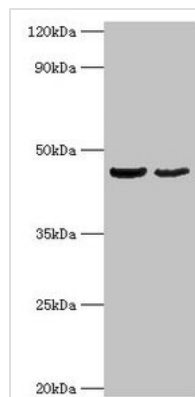




OLA1 Antibody

Product Code	CSB-PA016318HA01HU
Storage	Upon receipt, store at -20°C or -80°C. Avoid repeated freeze.
Uniprot No.	Q9NTK5
Immunogen	Recombinant Human Obg-like ATPase 1 protein (1-396AA)
Raised In	Rabbit
Species Reactivity	Human, Mouse
Tested Applications	ELISA, WB, IHC, IF; Recommended dilution: WB:1:500-1:5000, IHC:1:20-1:200, IF:1:50-1:200
Form	Liquid
Conjugate	Non-conjugated
Storage Buffer	Preservative: 0.03% Proclin 300 Constituents: 50% Glycerol, 0.01M PBS, PH 7.4
Purification Method	>95%, Protein G purified
Isotype	IgG
Clonality	Polyclonal
Alias	Obg-like ATPase 1 (DNA damage-regulated overexpressed in cancer 45) (DOC45) (GTP-binding protein 9), OLA1, GTPBP9
Immunogen Species	Homo sapiens (Human)
Research Area	Others
Target Names	OLA1

Image



Western blot

All lanes: OLA1 antibody at 2µg/ml

Lane 1: HepG2 whole cell lysate

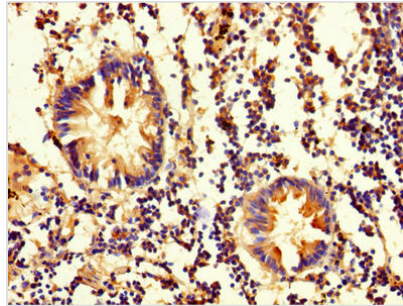
Lane 2: Mouse stomach tissue

Secondary

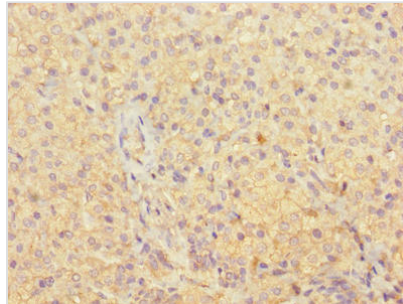
Goat polyclonal to rabbit IgG at 1/10000 dilution

Predicted band size: 45, 28, 32 kDa

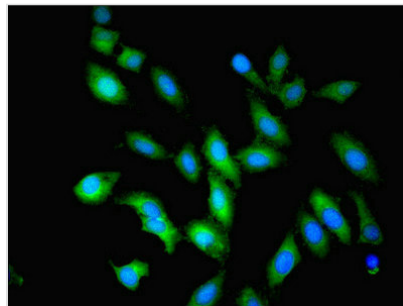
Observed band size: 45 kDa



Immunohistochemistry of paraffin-embedded human appendix tissue using CSB-PA016318HA01HU at dilution of 1:100



Immunohistochemistry of paraffin-embedded human adrenal gland tissue using CSB-PA016318HA01HU at dilution of 1:100



Immunofluorescent analysis of HeLa cells using CSB-PA016318HA01HU at dilution of 1:100 and Alexa Fluor 488-conjugated AffiniPure Goat Anti-Rabbit IgG(H+L)