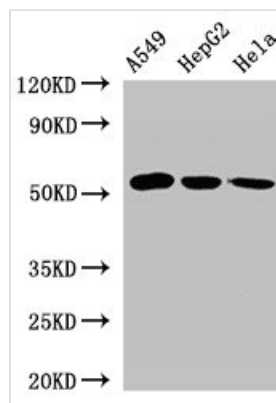




# ONECUT2 Antibody

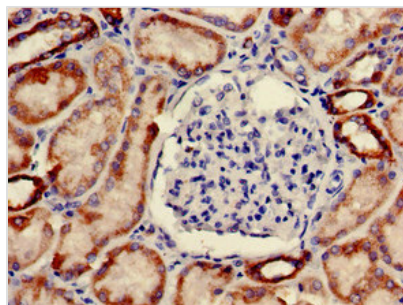
<b>Product Code</b>	CSB-PA016337LA01HU
<b>Storage</b>	Upon receipt, store at -20°C or -80°C. Avoid repeated freeze.
<b>Uniprot No.</b>	O95948
<b>Immunogen</b>	Recombinant Human One cut domain family member 2 protein (214-331AA)
<b>Raised In</b>	Rabbit
<b>Species Reactivity</b>	Human
<b>Tested Applications</b>	ELISA, WB, IHC; Recommended dilution: WB:1:500-1:5000, IHC:1:20-1:200
<b>Form</b>	Liquid
<b>Conjugate</b>	Non-conjugated
<b>Storage Buffer</b>	Preservative: 0.03% Proclin 300 Constituents: 50% Glycerol, 0.01M PBS, pH 7.4
<b>Purification Method</b>	>95%, Protein G purified
<b>Isotype</b>	IgG
<b>Clonality</b>	Polyclonal
<b>Alias</b>	One cut domain family member 2 (Hepatocyte nuclear factor 6-beta) (HNF-6-beta) (One cut homeobox 2) (Transcription factor ONECUT-2) (OC-2), ONECUT2, HNF6B
<b>Immunogen Species</b>	Homo sapiens (Human)
<b>Research Area</b>	Epigenetics and Nuclear Signaling
<b>Target Names</b>	ONECUT2

## Image



### Western Blot

Positive WB detected in: A549 whole cell lysate, HepG2 whole cell lysate, HeLa whole cell lysate  
All lanes: ONECUT2 antibody at 2.4µg/ml  
Secondary  
Goat polyclonal to rabbit IgG at 1/50000 dilution  
Predicted band size: 55 kDa  
Observed band size: 55 kDa



Immunohistochemistry of paraffin-embedded human kidney tissue using CSB-PA016337LA01HU at dilution of 1:100