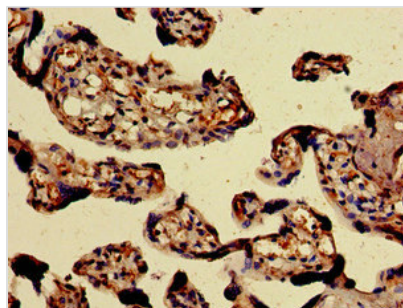




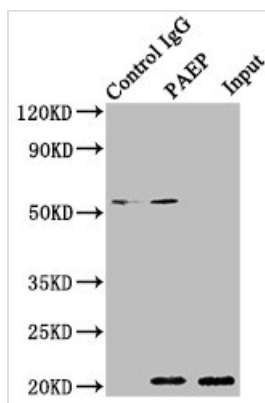
# PAEP Antibody

<b>Product Code</b>	CSB-PA017381LA01HU
<b>Storage</b>	Upon receipt, store at -20°C or -80°C. Avoid repeated freeze.
<b>Uniprot No.</b>	P09466
<b>Immunogen</b>	Recombinant Human Glycodelin protein (19-180AA)
<b>Raised In</b>	Rabbit
<b>Species Reactivity</b>	Human
<b>Tested Applications</b>	ELISA, IHC, IP; Recommended dilution: IHC:1:20-1:200, IP:1:200-1:2000
<b>Form</b>	Liquid
<b>Conjugate</b>	Non-conjugated
<b>Storage Buffer</b>	Preservative: 0.03% Proclin 300 Constituents: 50% Glycerol, 0.01M PBS, pH 7.4
<b>Purification Method</b>	>95%, Protein G purified
<b>Isotype</b>	IgG
<b>Clonality</b>	Polyclonal
<b>Alias</b>	Glycodelin (GD) (Placental protein 14) (PP14) (Pregnancy-associated endometrial alpha-2 globulin) (PAEG) (PEG) (Progestagen-associated endometrial protein) (Progesterone-associated endometrial protein) (Zona-binding inhibitory factor-1) (ZIF-1), PAEP
<b>Immunogen Species</b>	Homo sapiens (Human)
<b>Research Area</b>	Tags & Cell Markers
<b>Target Names</b>	PAEP

## Image



Immunohistochemistry of paraffin-embedded human placenta tissue using CSB-PA017381LA01HU at dilution of 1:100



Immunoprecipitating PAEP in 293T whole cell lysate

Lane 1: Rabbit control IgG instead of CSB-PA017381LA01HU in 293T whole cell lysate. For western blotting, a HRP-conjugated Protein G antibody was used as the secondary antibody (1/2000)

Lane 2: CSB-PA017381LA01HU (8μg) + 293T whole cell lysate (500μg)

Lane 3: 293T whole cell lysate (10μg)