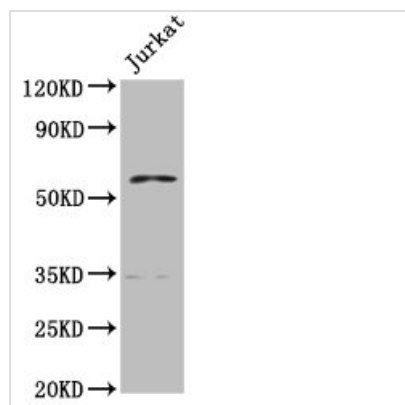




PCCB Antibody

Product Code	CSB-PA017523LA01HU
Storage	Upon receipt, store at -20°C or -80°C. Avoid repeated freeze.
Uniprot No.	P05166
Immunogen	Recombinant Human Propionyl-CoA carboxylase beta chain, mitochondrial protein (200-314AA)
Raised In	Rabbit
Species Reactivity	Human
Tested Applications	ELISA, WB, IHC; Recommended dilution: WB:1:500-1:5000, IHC:1:200-1:500
Form	Liquid
Conjugate	Non-conjugated
Storage Buffer	Preservative: 0.03% Proclin 300 Constituents: 50% Glycerol, 0.01M PBS, pH 7.4
Purification Method	>95%, Protein G purified
Isotype	IgG
Clonality	Polyclonal
Alias	Propionyl-CoA carboxylase beta chain, mitochondrial (PCCase subunit beta) (EC 6.4.1.3) (Propanoyl-CoA:carbon dioxide ligase subunit beta), PCCB
Immunogen Species	Homo sapiens (Human)
Research Area	Signal Transduction
Target Names	PCCB

Image



Western Blot

Positive WB detected in: Jurkat whole cell lysate

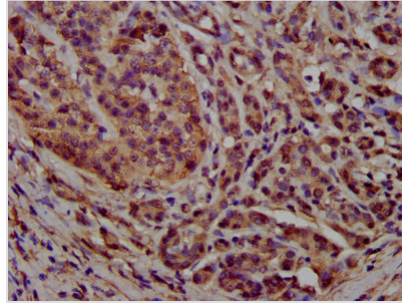
All lanes: PCCB antibody at 7.7µg/ml

Secondary

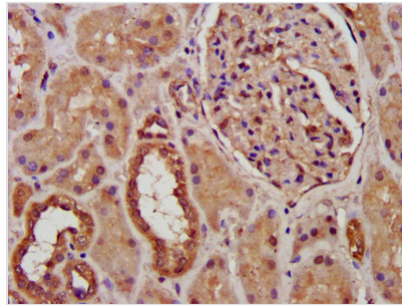
Goat polyclonal to rabbit IgG at 1/50000 dilution

Predicted band size: 59, 61 kDa

Observed band size: 59 kDa



IHC image of CSB-PA017523LA01HU diluted at 1:300 and staining in paraffin-embedded human pancreatic cancer performed on a Leica Bond™ system. After dewaxing and hydration, antigen retrieval was mediated by high pressure in a citrate buffer (pH 6.0). Section was blocked with 10% normal goat serum 30min at RT. Then primary antibody (1% BSA) was incubated at 4°C overnight. The primary is detected by a biotinylated secondary antibody and visualized using an HRP conjugated SP system.



IHC image of CSB-PA017523LA01HU diluted at 1:300 and staining in paraffin-embedded human kidney tissue performed on a Leica Bond™ system. After dewaxing and hydration, antigen retrieval was mediated by high pressure in a citrate buffer (pH 6.0). Section was blocked with 10% normal goat serum 30min at RT. Then primary antibody (1% BSA) was incubated at 4°C overnight. The primary is detected by a biotinylated secondary antibody and visualized using an HRP conjugated SP system.