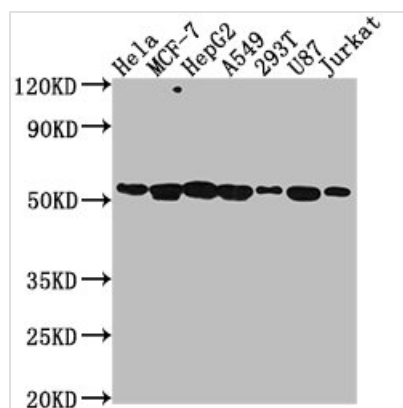




PRAMEF6 Antibody

Product Code	CSB-PA018623LA01HU
Storage	Upon receipt, store at -20°C or -80°C. Avoid repeated freeze.
Uniprot No.	Q5VXH4
Immunogen	Recombinant Human PRAME family member 6 protein (209-476AA)
Raised In	Rabbit
Species Reactivity	Human
Tested Applications	ELISA, WB; Recommended dilution: WB:1:1000-1:5000
Form	Liquid
Conjugate	Non-conjugated
Storage Buffer	Preservative: 0.03% Proclin 300 Constituents: 50% Glycerol, 0.01M PBS, pH 7.4
Purification Method	>95%, Protein G purified
Isotype	IgG
Clonality	Polyclonal
Alias	PRAME family member 6, PRAMEF6
Immunogen Species	Homo sapiens (Human)
Research Area	Others
Target Names	PRAMEF6

Image



Western Blot

Positive WB detected in: HeLa whole cell lysate, MCF-7 whole cell lysate, HepG2 whole cell lysate, A549 whole cell lysate, 293T whole cell lysate, U87 whole cell lysate, Jurkat whole cell lysate

All lanes: PRAMEF6 antibody at 1:2000

Secondary

Goat polyclonal to rabbit IgG at 1/50000 dilution

Predicted band size: 55 kDa

Observed band size: 55 kDa