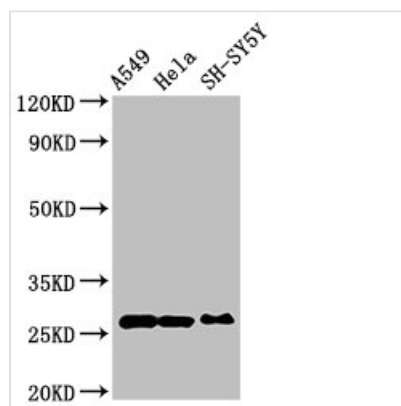




# PRDX6 Antibody

<b>Product Code</b>	CSB-PA018659LA01HU
<b>Storage</b>	Upon receipt, store at -20°C or -80°C. Avoid repeated freeze.
<b>Uniprot No.</b>	P30041
<b>Immunogen</b>	Recombinant Human Peroxiredoxin-6 protein (87-224AA)
<b>Raised In</b>	Rabbit
<b>Species Reactivity</b>	Human
<b>Tested Applications</b>	ELISA, WB, IHC, IF, IP; Recommended dilution: WB:1:500-1:5000, IHC:1:20-1:200, IF:1:50-1:200, IP:1:200-1:2000
<b>Form</b>	Liquid
<b>Conjugate</b>	Non-conjugated
<b>Storage Buffer</b>	Preservative: 0.03% Proclin 300 Constituents: 50% Glycerol, 0.01M PBS, pH 7.4
<b>Purification Method</b>	>95%, Protein G purified
<b>Isotype</b>	IgG
<b>Clonality</b>	Polyclonal
<b>Alias</b>	Peroxiredoxin-6 (EC 1.11.1.15) (1-Cys peroxiredoxin) (1-Cys PRX) (24 kDa protein) (Acidic calcium-independent phospholipase A2) (aiPLA2) (EC 3.1.1.4) (Antioxidant protein 2) (Liver 2D page spot 40) (Non-selenium glutathione peroxidase) (NSGPx) (Red blood cells page spot 12), PRDX6, AOP2 KIAA0106
<b>Immunogen Species</b>	Homo sapiens (Human)
<b>Research Area</b>	Signal Transduction
<b>Target Names</b>	PRDX6

## Image



### Western Blot

Positive WB detected in: A549 whole cell lysate, HeLa whole cell lysate, SH-SY5Y whole cell lysate

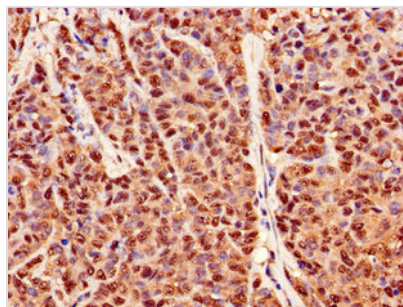
All lanes: PRDX6 antibody at 4μg/ml

Secondary

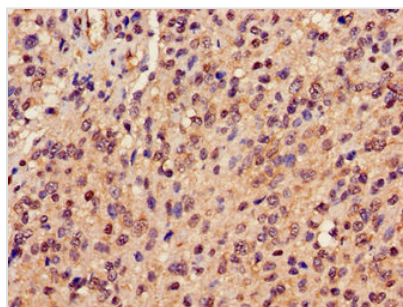
Goat polyclonal to rabbit IgG at 1/50000 dilution

Predicted band size: 26 kDa

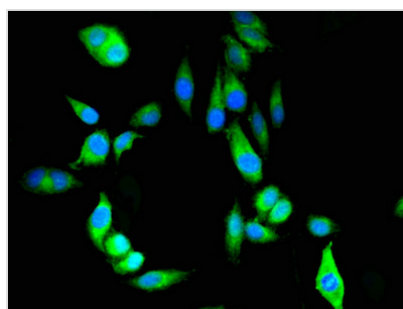
Observed band size: 26 kDa



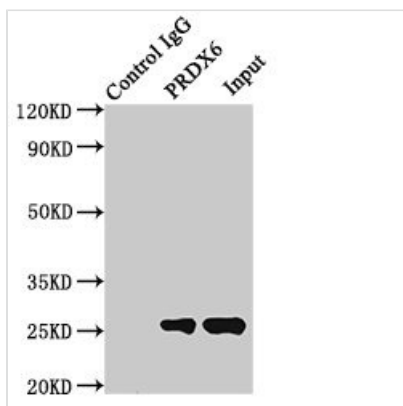
Immunohistochemistry of paraffin-embedded human ovarian cancer using CSB-PA018659LA01HU at dilution of 1:100



Immunohistochemistry of paraffin-embedded human glioma using CSB-PA018659LA01HU at dilution of 1:100



Immunofluorescent analysis of HeLa cells using CSB-PA018659LA01HU at dilution of 1:100 and Alexa Fluor 488-conjugated AffiniPure Goat Anti-Rabbit IgG(H+L)



Immunoprecipitating PRDX6 in HeLa whole cell lysate  
 Lane 1: Rabbit control IgG (1μg) instead of CSB-PA018659LA01HU in HeLa whole cell lysate. For western blotting, a HRP-conjugated Protein G antibody was used as the secondary antibody (1/2000)  
 Lane 2: CSB-PA018659LA01HU (8μg) + HeLa whole cell lysate (500μg)  
 Lane 3: HeLa whole cell lysate (10μg)