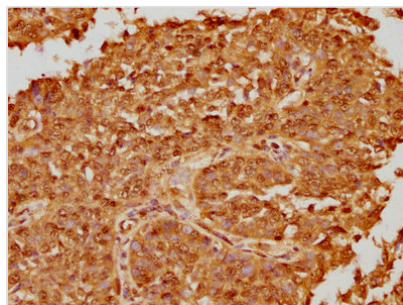




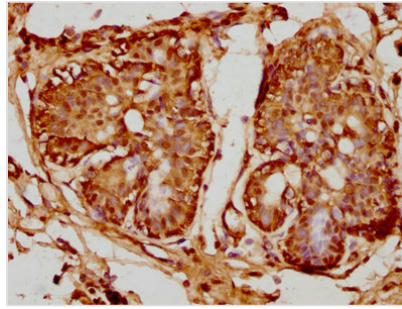
PSMB8 Antibody

Product Code	CSB-PA018886LA01HU
Storage	Upon receipt, store at -20°C or -80°C. Avoid repeated freeze.
Uniprot No.	P28062
Immunogen	Recombinant Human Proteasome subunit beta type-8 protein (176-276AA)
Raised In	Rabbit
Species Reactivity	Human
Tested Applications	ELISA, IHC; Recommended dilution: IHC:1:20-1:200
Form	Liquid
Conjugate	Non-conjugated
Storage Buffer	Preservative: 0.03% Proclin 300 Constituents: 50% Glycerol, 0.01M PBS, pH 7.4
Purification Method	>95%, Protein G purified
Isotype	IgG
Clonality	Polyclonal
Alias	Proteasome subunit beta type-8 (EC 3.4.25.1) (Low molecular mass protein 7) (Macropain subunit C13) (Multicatalytic endopeptidase complex subunit C13) (Proteasome component C13) (Proteasome subunit beta-5i) (Really interesting new gene 10 protein), PSMB8, LMP7 PSMB5i RING10 Y2
Immunogen Species	Homo sapiens (Human)
Research Area	Cell Biology
Target Names	PSMB8

Image



IHC image of CSB-PA018886LA01HU diluted at 1:100 and staining in paraffin-embedded human cervical cancer performed on a Leica Bond™ system. After dewaxing and hydration, antigen retrieval was mediated by high pressure in a citrate buffer (pH 6.0). Section was blocked with 10% normal goat serum 30min at RT. Then primary antibody (1% BSA) was incubated at 4°C overnight. The primary is detected by a biotinylated secondary antibody and visualized using an HRP conjugated SP system.



IHC image of CSB-PA018886LA01HU diluted at 1:100 and staining in paraffin-embedded human breast cancer performed on a Leica Bond™ system. After dewaxing and hydration, antigen retrieval was mediated by high pressure in a citrate buffer (pH 6.0). Section was blocked with 10% normal goat serum 30min at RT. Then primary antibody (1% BSA) was incubated at 4°C overnight. The primary is detected by a biotinylated secondary antibody and visualized using an HRP conjugated SP system.