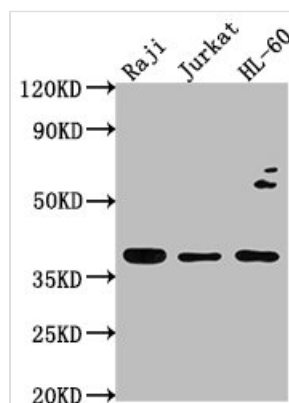




RASSF2 Antibody

Product Code	CSB-PA019374LA01HU
Storage	Upon receipt, store at -20°C or -80°C. Avoid repeated freeze.
Uniprot No.	P50749
Immunogen	Recombinant Human Ras association domain-containing protein 2 protein (69-326AA)
Raised In	Rabbit
Species Reactivity	Human
Tested Applications	ELISA, WB, IP; Recommended dilution: WB:1:1000-1:5000, IP:1:200-1:2000
Form	Liquid
Conjugate	Non-conjugated
Storage Buffer	Preservative: 0.03% Proclin 300 Constituents: 50% Glycerol, 0.01M PBS, pH 7.4
Purification Method	>95%, Protein G purified
Isotype	IgG
Clonality	Polyclonal
Alias	Ras association domain-containing protein 2, RASSF2, CENP-34 KIAA0168
Immunogen Species	Homo sapiens (Human)
Research Area	Signal Transduction
Target Names	RASSF2

Image

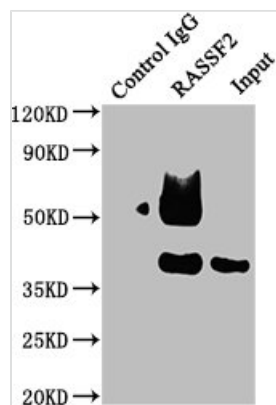


Western Blot

Positive WB detected in: Raji whole cell lysate, Jurkat whole cell lysate, HL-60 whole cell lysate
All lanes: RASSF2 antibody at 1:2000

Secondary

Goat polyclonal to rabbit IgG at 1/50000 dilution
Predicted band size: 38, 18 kDa
Observed band size: 38 kDa



Immunoprecipitating RASSF2 in Raji whole cell lysate

Lane 1: Rabbit control IgG instead of CSB-PA019374LA01HU in Raji whole cell lysate. For western blotting, a HRP-conjugated Protein G antibody was used as the secondary antibody (1/50000)

Lane 2: CSB-PA019374LA01HU (5ug) + Raji whole cell lysate (0.5mg)

Lane 3: Raji whole cell lysate (20ug)