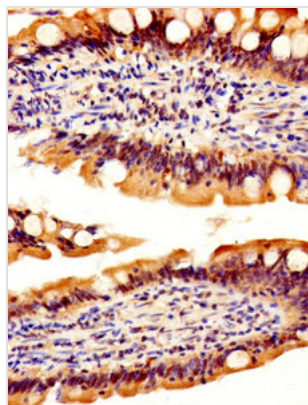




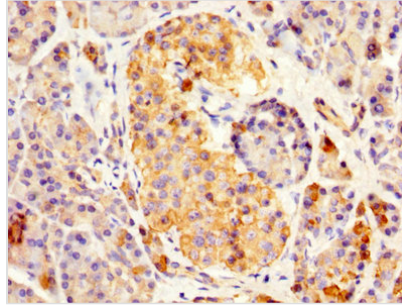
REG3A Antibody

Product Code	CSB-PA019548EA01HU
Storage	Upon receipt, store at -20°C or -80°C. Avoid repeated freeze.
Uniprot No.	Q06141
Immunogen	Recombinant Human Regenerating islet-derived protein 3-alpha protein (27-175AA)
Raised In	Rabbit
Species Reactivity	Human
Tested Applications	ELISA, IHC, IF; Recommended dilution: IHC:1:500-1:1000, IF:1:50-1:200
Form	Liquid
Conjugate	Non-conjugated
Storage Buffer	Preservative: 0.03% Proclin 300 Constituents: 50% Glycerol, 0.01M PBS, PH 7.4
Purification Method	>95%, Protein G purified
Isotype	IgG
Clonality	Polyclonal
Alias	Regenerating islet-derived protein 3-alpha (REG-3-alpha) (Hepatointestinal pancreatic protein) (HIP/PAP) (Human proislet peptide) (Pancreatitis-associated protein 1) (Regenerating islet-derived protein III-alpha) (Reg III-alpha) [Cleaved into: Regenerating islet-derived protein 3-alpha 16.5 kDa form; Regenerating islet-derived protein 3-alpha 15 kDa form], REG3A, HIP PAP PAP1
Immunogen Species	Homo sapiens (Human)
Research Area	Immunology
Target Names	REG3A

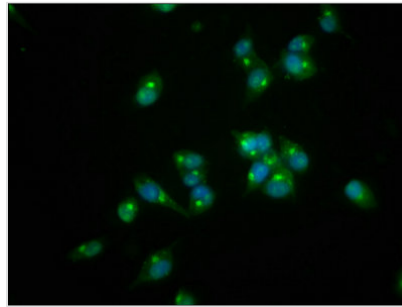
Image



IHC image of CSB-PA019548EA01HU diluted at 1:500 and staining in paraffin-embedded human small intestine tissue performed on a Leica Bond™ system. After dewaxing and hydration, antigen retrieval was mediated by high pressure in a citrate buffer (pH 6.0). Section was blocked with 10% normal goat serum 30min at RT. Then primary antibody (1% BSA) was incubated at 4°C overnight. The primary is detected by a biotinylated secondary antibody and visualized using an HRP conjugated SP system.



IHC image of CSB-PA019548EA01HU diluted at 1:500 and staining in paraffin-embedded human pancreatic tissue performed on a Leica Bond™ system. After dewaxing and hydration, antigen retrieval was mediated by high pressure in a citrate buffer (pH 6.0). Section was blocked with 10% normal goat serum 30min at RT. Then primary antibody (1% BSA) was incubated at 4°C overnight. The primary is detected by a biotinylated secondary antibody and visualized using an HRP conjugated SP system.



Immunofluorescence staining of SH-SY5Y cells with CSB-PA019548EA01HU at 1:166, counter-stained with DAPI. The cells were fixed in 4% formaldehyde, permeabilized using 0.2% Triton X-100 and blocked in 10% normal Goat Serum. The cells were then incubated with the antibody overnight at 4°C. The secondary antibody was Alexa Fluor 488-conjugated AffiniPure Goat Anti-Rabbit IgG(H+L).