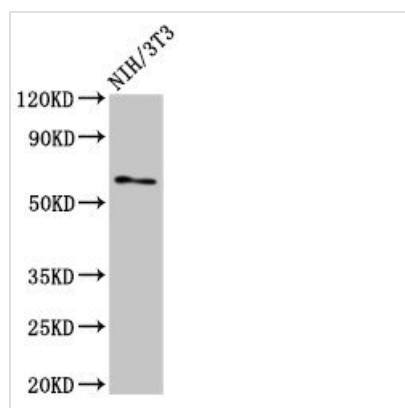




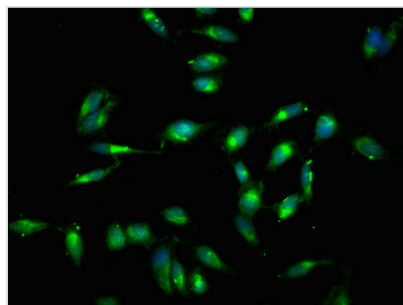
# RELB Antibody

<b>Product Code</b>	CSB-PA019554LA01HU
<b>Storage</b>	Upon receipt, store at -20°C or -80°C. Avoid repeated freeze.
<b>Uniprot No.</b>	Q01201
<b>Immunogen</b>	Recombinant Human Transcription factor RelB protein (400-579AA)
<b>Raised In</b>	Rabbit
<b>Species Reactivity</b>	Human, Mouse
<b>Tested Applications</b>	ELISA, WB, IF; Recommended dilution: WB:1:2000-1:10000, IF:1:50-1:500
<b>Form</b>	Liquid
<b>Conjugate</b>	Non-conjugated
<b>Storage Buffer</b>	Preservative: 0.03% Proclin 300 Constituents: 50% Glycerol, 0.01M PBS, pH 7.4
<b>Purification Method</b>	>95%, Protein G purified
<b>Isotype</b>	IgG
<b>Clonality</b>	Polyclonal
<b>Alias</b>	Transcription factor RelB (I-Rel), RELB
<b>Immunogen Species</b>	Homo sapiens (Human)
<b>Research Area</b>	Cell Biology
<b>Target Names</b>	RELB

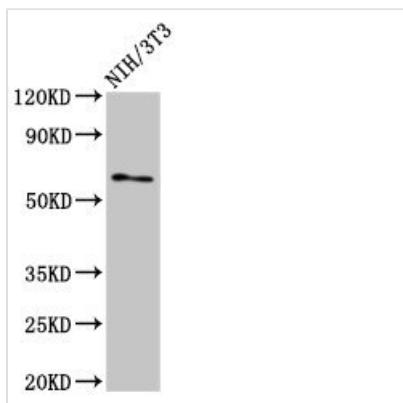
## Image



Western Blot  
Positive WB detected in: NIH/3T3 whole cell lysate  
All lanes: RELB antibody at 3μg/ml  
Secondary  
Goat polyclonal to rabbit IgG at 1/50000 dilution  
Predicted band size: 63, 62, 15 kDa  
Observed band size: 63 kDa



Immunofluorescent analysis of HeLa cells using CSB-PA019554LA01HU at dilution of 1:100 and Alexa Fluor 488-conjugated AffiniPure Goat Anti-Rabbit IgG(H+L)



Western Blot

Positive WB detected in: NIH/3T3 whole cell lysate

All lanes: RELB antibody at 3μg/ml

Secondary

Goat polyclonal to rabbit IgG at 1/50000 dilution

Predicted band size: 63 kDa

Observed band size: 63 kDa