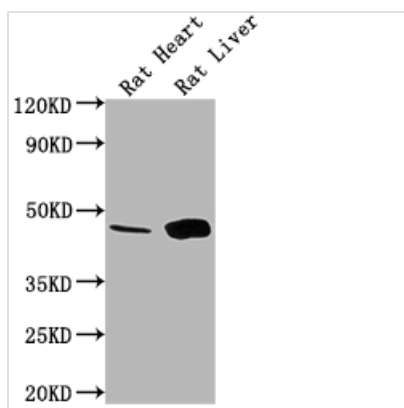




# Ren1 Antibody

|                            |  |
|----------------------------|--|
| <b>Product Code</b>        | CSB-PA019561LA01RA   |
| <b>Storage</b>             | Upon receipt, store at -20°C or -80°C. Avoid repeated freeze.                    |
| <b>Uniprot No.</b>         | P08424   |
| <b>Immunogen</b>           | Recombinant Rat Ren1 protein (65-264AA)  |
| <b>Raised In</b>           | Rabbit   |
| <b>Species Reactivity</b>  | Rat  |
| <b>Tested Applications</b> | ELISA, WB, IHC; Recommended dilution: WB:1:1000-1:5000, IHC:1:100-1:500          |
| <b>Form</b>                | Liquid   |
| <b>Conjugate</b>           | Non-conjugated   |
| <b>Storage Buffer</b>      | Preservative: 0.03% Proclin 300<br>Constituents: 50% Glycerol, 0.01M PBS, PH 7.4 |
| <b>Purification Method</b> | >95%, Antigen Affinity purified & Affinity purified                              |
| <b>Isotype</b>             | IgG  |
| <b>Clonality</b>           | Polyclonal   |
| <b>Alias</b>               | Renin (EC 3.4.23.15) (Angiotensinogenase), Ren1, Ren                             |
| <b>Immunogen Species</b>   | Rattus norvegicus (Rat)  |
| <b>Research Area</b>       | Signal Transduction  |
| <b>Target Names</b>        | Ren1   |

## Image



### Western Blot

Positive WB detected in: Rat Heart tissue, Rat Liver tissue

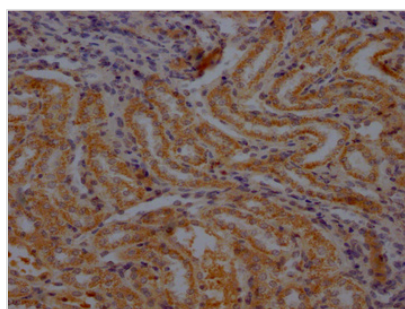
All lanes: Ren1 antibody at 1:1000

Secondary

Goat polyclonal to rabbit IgG at 1/50000 dilution

Predicted band size: 45 kDa

Observed band size: 45 kDa



IHC image of CSB-PA019561LA01RA diluted at 1:100 and staining in paraffin-embedded rat kidney tissue performed on a Leica Bond™ system. After dewaxing and hydration, antigen retrieval was mediated by high pressure in a citrate buffer (pH 6.0). Section was blocked with 10% normal goat serum 30min at RT. Then primary antibody (1% BSA) was incubated at 4°C overnight. The primary is detected by a Goat



anti-rabbit polymer IgG labeled by HRP and visualized using 0.05% DAB.

---