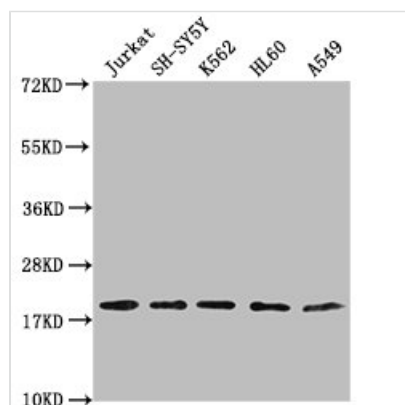




RPL24 Antibody

| | |
|----------------------------|---|
| Product Code | CSB-PA020202LA01HU |
| Storage | Upon receipt, store at -20°C or -80°C. Avoid repeated freeze. |
| Uniprot No. | P83731 |
| Immunogen | Recombinant Human 60S ribosomal protein L24 protein (1-157AA) |
| Raised In | Rabbit |
| Species Reactivity | Human |
| Tested Applications | ELISA, WB; Recommended dilution: WB:1:1000-1:5000 |
| Form | Liquid |
| Conjugate | Non-conjugated |
| Storage Buffer | Preservative: 0.03% Proclin 300 Constituents: 50% Glycerol, 0.01M PBS, pH 7.4 |
| Purification Method | >95%, Protein G purified |
| Isotype | IgG |
| Clonality | Polyclonal |
| Alias | 60S ribosomal protein L24 (60S ribosomal protein L30) (Large ribosomal subunit protein eL24), RPL24 |
| Immunogen Species | Homo sapiens (Human) |
| Research Area | Epigenetics and Nuclear Signaling |
| Target Names | RPL24 |

Image



Western Blot

Positive WB detected in: Jurkat whole cell lysate, SH-SY5Y whole cell lysate, K562 whole cell lysate, HL-60 whole cell lysate, A549 whole cell lysate

All lanes: RPL24 antibody at 1:2000

Secondary

Goat polyclonal to rabbit IgG at 1/50000 dilution

Predicted band size: 18 kDa

Observed band size: 18 kDa