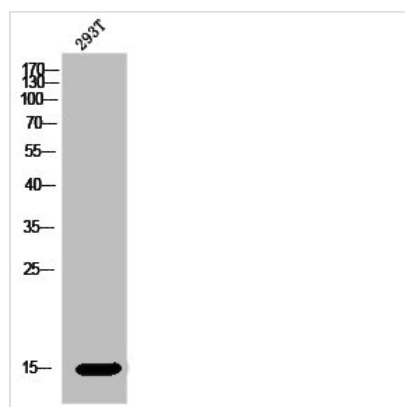




MRPL51 Antibody

Product Code	CSB-PA020273
Storage	Upon receipt, store at -20°C or -80°C. Avoid repeated freeze.
Uniprot No.	Q4U2R6
Immunogen	Synthesized peptide derived from the Internal region of Human MRP-L51.
Raised In	Rabbit
Species Reactivity	Human, Mouse
Tested Applications	WB, IHC, ELISA; WB:1:500-1:2000, IHC:1:100-1:300, ELISA:1:20000
Form	Liquid
Conjugate	Non-conjugated
Storage Buffer	Liquid in PBS containing 50% glycerol, 0.5% BSA and 0.02% sodium azide.
Purification Method	The antibody was affinity-purified from rabbit antiserum by affinity-chromatography using epitope-specific immunogen.
Isotype	IgG
Alias	MRPL51; MRP64; CDA09; HSPC241; 39S ribosomal protein L51; mitochondrial; L51mt; MRP-L51; bMRP-64; bMRP64
Immunogen Species	Homo sapiens (Human)
Target Names	MRPL51

Image



Western Blot analysis of 293T cells using MRP-L51 Polyclonal Antibody