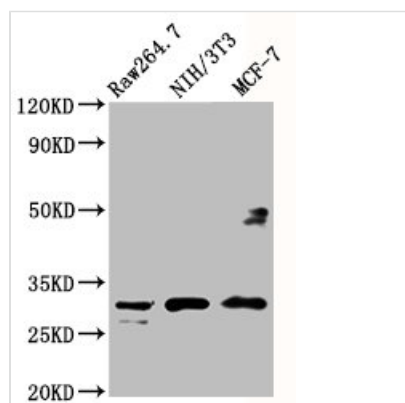




RPL7A Antibody

Product Code	CSB-PA020303LA01HU
Storage	Upon receipt, store at -20°C or -80°C. Avoid repeated freeze.
Uniprot No.	P62424
Immunogen	Recombinant Human 60S ribosomal protein L7a protein (2-138AA)
Raised In	Rabbit
Species Reactivity	Human, Mouse
Tested Applications	ELISA, WB, IHC; Recommended dilution: WB:1:500-1:5000, IHC:1:200-1:500
Form	Liquid
Conjugate	Non-conjugated
Storage Buffer	Preservative: 0.03% Proclin 300 Constituents: 50% Glycerol, 0.01M PBS, pH 7.4
Purification Method	>95%, Protein G purified
Isotype	IgG
Clonality	Polyclonal
Alias	60S ribosomal protein L7a (Large ribosomal subunit protein eL8) (PLA-X polypeptide) (Surfeit locus protein 3), RPL7A, SURF-3 SURF3
Immunogen Species	Homo sapiens (Human)
Research Area	Epigenetics and Nuclear Signaling
Target Names	RPL7A

Image



Western Blot

Positive WB detected in: RAW264.7 whole cell lysate, NIH/3T3 whole cell lysate, MCF-7 whole cell lysate

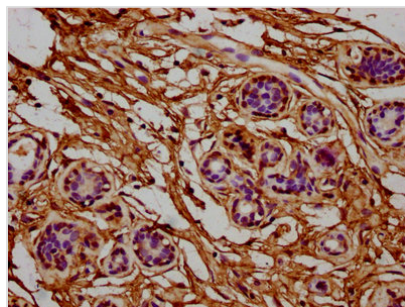
All lanes: RPL7A antibody at 5µg/ml

Secondary

Goat polyclonal to rabbit IgG at 1/50000 dilution

Predicted band size: 30 kDa

Observed band size: 30 kDa



IHC image of CSB-PA020303LA01HU diluted at 1:400 and staining in paraffin-embedded human breast cancer performed on a Leica Bond™ system. After dewaxing and hydration, antigen retrieval was mediated by high pressure in a citrate buffer (pH 6.0). Section was blocked with 10% normal goat serum 30min at RT. Then primary antibody (1% BSA) was incubated at 4°C overnight. The primary is detected by a biotinylated secondary antibody and visualized using an HRP conjugated SP system.